



Psalm 4: Let Your Face Shine on Us

Music by Luke D. Rosen

For Cantor, SATB Choir, Piano, Guitar

Instrument Parts:

Flute
Clarinet in B^b
Alto Saxophone
Tenor Saxophone
Horn in F
Trumpet in B^b I & II
Trombone I & II
Tuba
Violin I & II

Responsorial Psalm for:
Third Sunday of Easter (B)

Psalm 4: Let Your Face Shine on Us

Gently ♩ = 70
Introduction

Piano

Pno.

Cantor

Pno.

Cantor

Pno.

Refrain

11 G A

Choir Lord, let your face shine on us.

Pno.

13 Bm

Choir Lord, let your face shine on us.

Pno.

Verse 1,2,3,4

Freely

E// Dm// E// C// D//

Choir

1. In peace, the God of grace gave me an answer; from anguish you released me, have mercy and hear me!

2. Now that the LORD works wonders for his faithful one; the LORD will hear me when - ever I call him.

3. "What can bring us happiness?" many say. Lift up the light of your face on us, O LORD.

4. In peace I will lie down and fall asleep, for you alone, O LORD, make me dwell in safety.

a tempo

16 G

Pno.

Final Refrain

18 G A

Choir

Lord, let your face shine on us.

Pno.

20 Bm

Choir

Lord, let your shine us.

Pno.

22 A G// Bm// C// E//

Pno.

molto rit.

Psalm 4: Let Your Face Shine on Us

Luke D. Rosen

Gently ♩ = 70
Introduction

Piano

4

G A Bm C

Cantor Refrain

7

G

Cantor

Lord, let your face shine on us.

9

Bm

Cantor

Lord, let your face shine on us.

Refrain

11

G A

Choir

Lord, let your face shine on us.

13

Bm C

Choir

Lord, let your face shine on us.

Verse 1,2,3,4
Freely

15 E// Dm// E// C// D//

Choir

1. I called, the God of justice gave me answer; from anguish you raised me, have mercy and hear me!
 2. Know that the LORD works wonders for his faithful one; the LORD will come when - ever I call him
 3. "What can bring us happiness?" many say. Lift up the light of your face on us, O LORD.
 4. In peace I will lie down and fall a - sleep, for you a - lone, O LORD, my well safety.

a tempo

16 G

Pno.

Final Refrain

18 G A

Choir

Lord, let your face shine on us.

20 Bm C

Choir

Lord, let your face shine on us.

molto rit.

22 Am// G// Bm// C// E//

Pno.

A Note on instrumentation for any Psalm Setting by Luke D. Rosen

1. Each psalm may be played with any combination of instruments with no obligation to use all instruments at all.
2. No dynamic markings are given in the scores: the composer wishes for the conductor or group/director to take liberties with dynamics and have them grow organically from the ensemble and the space.
3. The Horn in F and Trombone I parts double each other (unless otherwise noted in the score parts):

For Brass Quartet, use Trumpet I/II and Trombone I/II.

For Brass Quintet, use Trumpet I/II, Horn in F, Trombone II, and Tuba.

SAMPLE

Flute

Psalm 4: Let Your Face Shine on Us

Revised Grail Psalter
Ps 4: 2,4,7,9 (7b)

Luke D. Rosen

Gently ♩ = 70
Introduction

2

7 Cantor Refrain

Refrain

11

Verse 1,2,3,4

15 Freely a tempo

cue: play:

Final Refrain

18

21

molto rit.

Psalm 4: 2,4,7,9 (7b). Refrain text © 1969, 1981, 1997, ICEL. All rights reserved. Used with permission.

Verse text © 2010, The Revised Grail Psalms, Conception Abbey and the Grail. All rights reserved. Used with permission.

Music © 2015, Luke D. Rosen. All rights reserved.

Clarinet in B \flat
Revised Grail Psalter
Ps 4: 2,4,7,9 (7b)

Psalm 4: Let Your Face Shine on Us

Luke D. Rosen

Gently $\text{♩} = 70$
Introduction

2

Cantor Refrain

Refrain

7

3

Verse 1,2,
freely

13

play:

a tempo

Final Refrain

16

20

molto rit.

Psalm 4: 2,4,7,9 (7b). Refrain text © 1969, 1981, 1997, ICEL. All rights reserved. Used with permission.

Verse text © 2010, The Revised Grail Psalms, Conception Abbey and the Grail. All rights reserved. Used with permission.

Music © 2015, Luke D. Rosen. All rights reserved.

Alto Saxophone
Revised Grail Psalter
Ps 4: 2,4,7,9 (7b)

Psalm 4: Let Your Face Shine on Us

Luke D. Rosen

Introduction
Gently ♩ = 70

2

7 Cantor Refrain 3 Refrain

14 Verse 3 4 Fully cue. play:

16 a tempo Refrain

21 molto rit.

Tenor Saxophone
Revised Grail Psalter
Ps 4: 2,4,7,9 (7b)

Psalm 4: Let Your Face Shine on Us

Luke D. Rosen

Gently ♩ = 70
Introduction

2

7 Cantor Refrain 3 Refrain

14 Verse 3,4
Cue. play:

16 a tempo Refrain

21 molto rit.

Horn in F

Revised Grail Psalter

Ps 4: 2,4,7,9 (7b)

Psalm 4: Let Your Face Shine on Us

Luke D. Rosen

Gently ♩ = 70

Introduction

2



7 Cantor Refrain

4

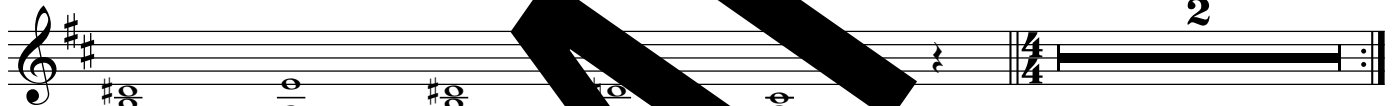
Refrain



Verse 1,2,3,4

Freely

15



a tempo

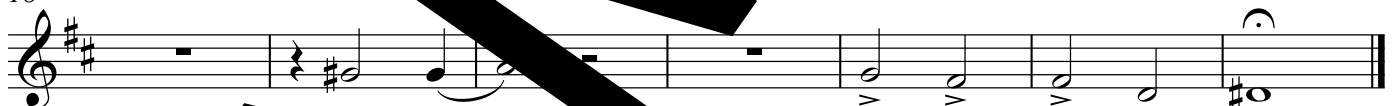
2

cue:

play:

18 Final Refrain

molto rit.



SAMPLE

Psalm 4: 2,4,7,9 (7b). Refrain text © 1969, 1981, 1997, ICEL. All rights reserved. Used with permission.

Verse text © 2010, The Revised Grail Psalms, Conception Abbey and the Grail. All rights reserved. Used with permission.

Music © 2015, Luke D. Rosen. All rights reserved.

Trumpet in B \flat I II

Psalm 4: Let Your Face Shine on Us

Revised Grail Psalter
Ps 4: 2,4,7,9 (7b)

Luke D. Rosen

Gently $\text{♩} = 70$
Introduction
2

Musical notation for the Introduction, measures 1-6. The key signature is three sharps (F#, C#, G#) and the time signature is 4/4. The music begins with a whole rest, followed by a half note G4, a quarter note A4, a quarter note B4, a quarter note C5, a quarter note B4, a quarter note A4, and a quarter note G4.

7 **Cantor Refrain**
4 Refrain

Musical notation for the Cantor Refrain, measures 7-14. The key signature is three sharps and the time signature is 4/4. The music begins with a whole rest, followed by a half note G4, a quarter note A4, a quarter note B4, a quarter note C5, a quarter note B4, a quarter note A4, and a quarter note G4. The refrain is repeated twice.

15 **Verse 1,2,3,4**
Freely

Musical notation for Verse 1,2,3,4, measures 15-17. The key signature is three sharps and the time signature is 4/4. The music begins with a whole rest, followed by a half note G4, a quarter note A4, a quarter note B4, a quarter note C5, a quarter note B4, a quarter note A4, and a quarter note G4. The music is marked "a tempo" and "2".

18 **Final Refrain**

Musical notation for the Final Refrain, measures 18-21. The key signature is three sharps and the time signature is 4/4. The music begins with a whole rest, followed by a half note G4, a quarter note A4, a quarter note B4, a quarter note C5, a quarter note B4, a quarter note A4, and a quarter note G4. The music is marked "molto rit." and ends with a fermata.

SAMPLE

Psalm 4: 2,4,7,9 (7b). Refrain text © 1969, 1981, 1997, ICEL. All rights reserved. Used with permission.

Verse text © 2010, The Revised Grail Psalms, Conception Abbey and the Grail. All rights reserved. Used with permission.

Music © 2015, Luke D. Rosen. All rights reserved.

Trombone I II

Revised Grail Psalter

Ps 4: 2,4,7,9 (7b)

Psalm 4: Let Your Face
Shine on Us

Gently ♩ = 70
Introduction

Luke D. Rosen

2

7 Cantor Refrain Refrain

4

15 Verse 1,2,3,4 Freely

a tempo

2

cue:

play:

18 Final Refrain

molto rit.

SAMPLE

Tuba

Psalm 4: Let Your Face Shine on Us

Revised Grail Psalter
Ps 4: 2,4,7,9 (7b)

Luke D. Rosen

Gently ♩ = 70
Introduction

2

7 Cantor Refrain 4 Refrain

15 Verse 1,2,3,4
Freely

a tempo

cue:

play:

18 Final Refrain

molto rit.

SAMPLE

Psalm 4: Let Your Face Shine on Us

Violin I II

Revised Grail Psalter

Ps 4: 2,4,7,9 (7b)

Luke D. Rosen

Gently ♩ = 70
Introduction

Cantor Refrain

Refrain

Refrain 1,2,3,4

16 **a tempo**

Musical notation for measures 16 and 17. The key signature is one sharp (F#) and the time signature is 4/4. Measure 16 begins with a whole rest. Measures 16 and 17 feature a rhythmic pattern of eighth notes with slurs, repeated in both the upper and lower staves.

Final Refrain

Musical notation for measures 18, 19, and 20. The key signature is one sharp (F#) and the time signature is 4/4. Measures 18 and 19 continue the eighth-note rhythmic pattern. Measure 20 features a change in the upper staff melody, including a sharp sign (#) above the staff.

21

molto rit.

Musical notation for measures 21 and 22. The key signature is one sharp (F#) and the time signature is 4/4. Measure 21 continues the eighth-note rhythmic pattern. Measure 22 shows a change in the upper staff melody and includes a fermata over the final note. The piece concludes with a double bar line.

SAMPLE