



# Psalm 24: King of Glory

Music by Luke D. Rosen

For Cantor, SATB Choir, Piano, Guitar

Instrument Parts:

Flute  
Clarinet in B<sup>b</sup>  
Alto Saxophone  
Tenor Saxophone  
Horn in F  
Trumpet in B<sup>b</sup> I & II  
Trombone I & II  
Tuba  
Violin I & II

Responsorial Psalm for:  
Fourth Sunday of Advent (A)

# Psalm 24: King of Glory

**Steadily** ♩ = 80  
**Introduction**

Piano

G Dm B<sup>b</sup> F

Pno.

4 Csus<sup>4</sup> C G Dm

Pno.

7 B<sup>b</sup> F C C

Cantor Refrain

9 G Dm B<sup>b</sup> F

Let the Lord en - ter; he is king of

Pno.

Ca

12 Csus<sup>4</sup> C G Dm

- ry. Let the Lord en - ter;

Pno.

15 B<sup>b</sup> F C<sup>sus</sup><sup>4</sup> C

Cantor

he is king of glo - ry.

Pno.

Refrain

17 G Dm F

Choir

Let the Lord en - ter; he is king of

Pno.

20 C<sup>sus</sup><sup>4</sup> G Dm

Choir

- ry. Let the Lord en - ter;

Pno.

23 **B<sup>b</sup>** **F** **Csus<sup>4</sup>** **C**

Choir he is king of glo - ry

Pno.

Verse 1,2,3

25 **G** **Dm**

1. The LORD'S is the earth and full - ness, the

2. Who shall climb the moun-tain of the LORD?

3. Bless-ings from the LORD shall re-ceive, and

Pno.

27 **B<sup>b</sup>** **F** **Csus<sup>4</sup>** **C**

world, and those who dwell in it.

Who shall stand in his ho - ly place? The

re-wa from the God who saves him.

Pno.



29 G Dm

It is he who set it on the seas; on the  
clean of hands and pure of heart, those  
Such are the peo - ple who see him, who

31 B<sup>b</sup> F Csus<sup>4</sup> C

riv - ers he made it  
soul is not set on vain things.  
seek the face of Ja - cob.

33 Final Re - main G B<sup>b</sup> F

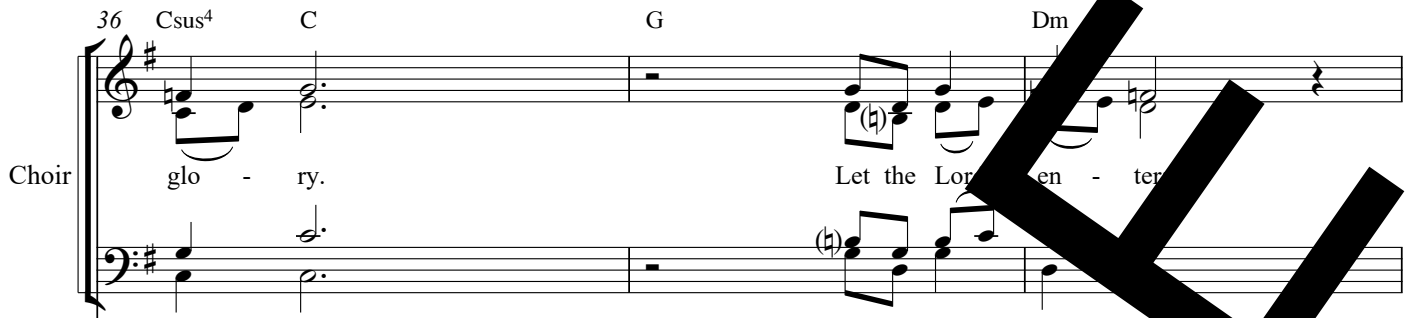
Choir the Lord en - ter; he is king of

Pno.

36 Csus<sup>4</sup> C G Dm

Choir

glo - ry. Let the Lord en - ter



Detailed description: This system contains the first two staves of music. The top staff is for the Choir, with a treble clef and a key signature of one sharp (F#). It features vocal lines with lyrics: "glo - ry. Let the Lord en - ter". Chords are indicated above the staff: Csus<sup>4</sup>, C, G, and Dm. The bottom staff is for the Piano (Pno.), with a bass clef and a key signature of one sharp. It shows a piano accompaniment with chords and melodic lines.

Pno.



Detailed description: This block shows the piano accompaniment for the first system, consisting of two staves (treble and bass clef). The music is in a key of one sharp and features a steady accompaniment with chords and moving lines.

39 B<sup>b</sup> F Csus<sup>4</sup> C

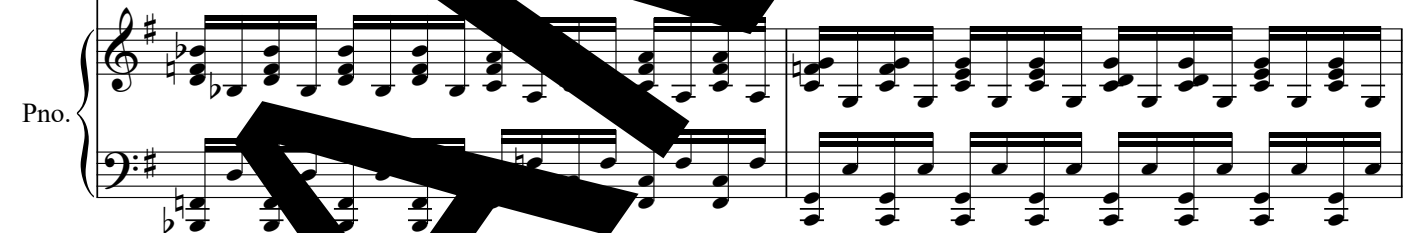
Choir

he is king of glo - ry.



Detailed description: This system contains the second two staves of music. The top staff is for the Choir, with a treble clef and a key signature of one sharp. It features vocal lines with lyrics: "he is king of glo - ry.". Chords are indicated above the staff: B<sup>b</sup>, F, Csus<sup>4</sup>, and C. The bottom staff is for the Piano (Pno.), with a bass clef and a key signature of one sharp. It shows a piano accompaniment with chords and melodic lines.

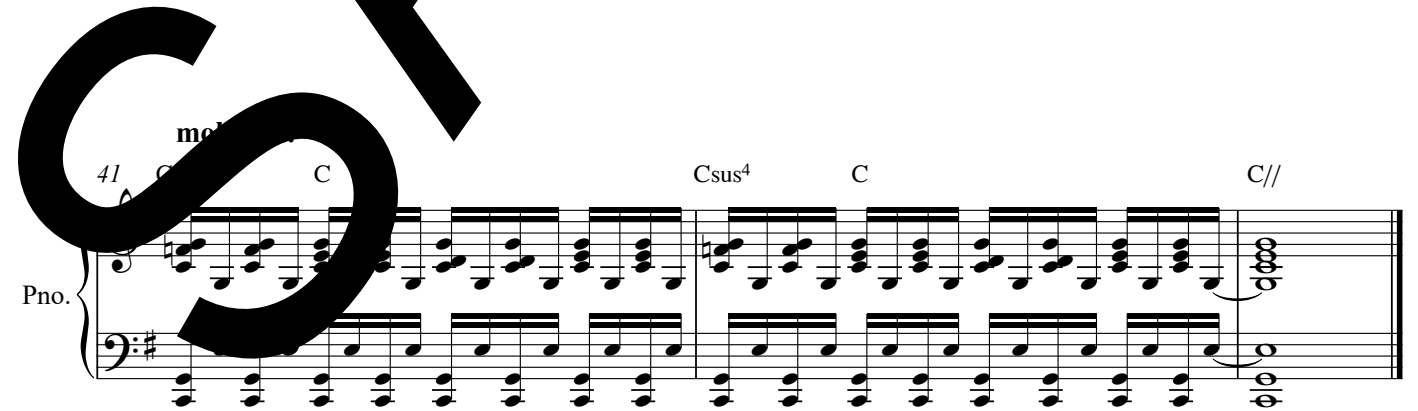
Pno.



Detailed description: This block shows the piano accompaniment for the second system, consisting of two staves (treble and bass clef). The music is in a key of one sharp and features a steady accompaniment with chords and moving lines.

41 C Csus<sup>4</sup> C C//

Pno.



Detailed description: This system contains the third two staves of music. The top staff is for the Piano (Pno.), with a treble clef and a key signature of one sharp. It features a piano accompaniment with chords and melodic lines. Chords are indicated above the staff: C, Csus<sup>4</sup>, C, and C//. The bottom staff is for the Piano (Pno.), with a bass clef and a key signature of one sharp. It shows a piano accompaniment with chords and melodic lines.

# Psalm 24: King of Glory

Luke D. Rosen

**Steadily** ♩ = 80  
**Introduction**

Piano

1 G Dm

Pno.

4 Csus<sup>4</sup> C G

Pno.

7 B<sup>b</sup> F Csus<sup>4</sup> C

**Cantor Refrain**

9 G Dm B<sup>b</sup> F Csus<sup>4</sup> C

Let the Lord en - ter; he is king of glo - ry.

Cantor

13 G Dm B<sup>b</sup> F Csus<sup>4</sup> C

Let the Lord en - ter; he is king of glo - ry.

Refrain

17 G Dm B<sup>b</sup> F

Choir Let the Lord en - ter; is King of

20 C<sup>sus</sup>4 C G Dm

Choir glo - ry. Let the Lord en - ter;

23 B<sup>b</sup> F C<sup>sus</sup>4 C

Choir he is King of glo - ry.

Verse 1,2,3

25 G Dm

The LORD'S is the earth and its full - ness, the

2. Blessings shall climb the moun-tain of the LORD?

3. Bless-ings from the LORD shall he re - ceive, and



27 B<sup>b</sup> F Csus<sup>4</sup>

world, and those who dwell in it.

Who shall stand in his ho - ly place? \_\_\_\_\_ The

right re - ward from the God who \_\_\_\_\_ him. \_\_\_\_\_

29 G Dm

It is he who set it on the seas; on the

clean of hands and pure of heart, whose

Such are the people who seek him, who

31 B<sup>b</sup> F Csus<sup>4</sup> C

riv - er he made it firm.

soul is not set \_\_\_\_\_ on vain things.

seek the face of the God of Ja - cob.

**SAMPLE**

Final Refrain

33 G Dm B<sup>b</sup> F

Choir

Let the Lord en - ter; is ing of

36 Csus<sup>4</sup> C G Dm

Choir

glo - ry. Let the Lord en - ter;

39 B<sup>b</sup> F Csus<sup>4</sup> C

Choir

he is king of glo - ry.

**molto rit.**

41 Csus<sup>4</sup> Csus<sup>4</sup> C C//

Pno.

## A Note on instrumentation for any Psalm Setting by Luke D. Rosen

1. Each psalm may be played with any combination of instruments with no obligation to use all instruments at all.
2. No dynamic markings are given in the scores: the composer wishes for the conductor or group/director to take liberties with dynamics and have them grow organically from the ensemble and the space.
3. The Horn in F and Trombone I parts double each other (unless otherwise noted in the score parts):

For Brass Quartet, use Trumpet I/II and Trombone I/II.

For Brass Quintet, use Trumpet I/II, Horn in F, Trombone II, and Tuba.

**SAMPLE**

Flute

# Psalm 24: King of Glory

Revised Grail Psalter

Ps 24: 1-2,3-4ab,5-6 (cf. 7c,10b)

Luke D. Rosen

**Steadily** ♩ = 80  
**Introduction**

3

7 **Cantor**

17 **Refrain**

3

23 **Verse 1,2,3**

3

7

33 **Final Refrain**

3

39 **molto rit.**

3

Clarinet in B $\flat$   
Revised Grail Psalter  
Ps 24: 1-2,3-4ab,5-6 (cf. 7c,10b)

# Psalm 24: King of Glory

Luke D. Rosen

Steadily  $\text{♩} = 80$   
Introduction

3

7

Refrain

17

Refrain

23

Verse 1,2,3

33

Final Refrain

39

*molto rit.*

Alto Saxophone  
Revised Grail Psalter  
Ps 24: 1-2,3-4ab,5-6 (cf. 7c,10b)

# Psalm 24: King of Glory

Luke D. Rosen

Steadily ♩ = 80  
Introduction

3

7 Refrain

17 Refrain

3

23 Verse 1,2,3

7

33 Final Refrain

3

39

molto rit.

Tenor Saxophone

# Psalm 24: King of Glory

Revised Grail Psalter

Ps 24: 1-2,3-4ab,5-6 (cf. 7c,10b)

Luke D. Rosen

**Steadily** ♩ = 80  
**Introduction**

3

7 **Cantor Key** 7

17 **Refrain** 3 3

23 **Verse 1,2,3** 3 7

33 **Final Refrain** 3 3

39 **molto rit.** 3

Horn in F

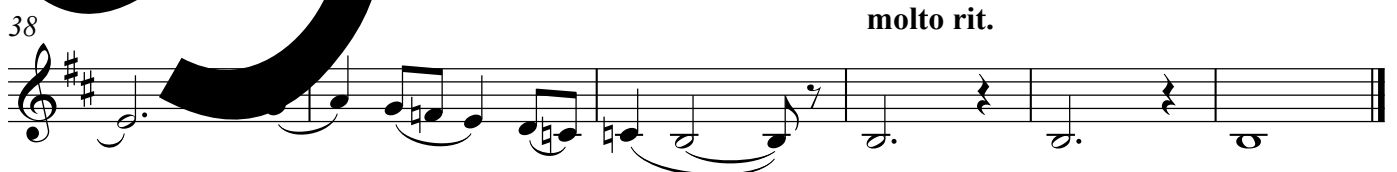
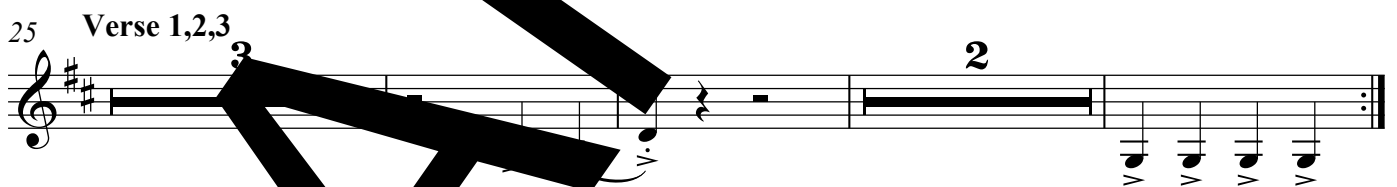
Revised Grail Psalter

Ps 24: 1-2,3-4ab,5-6 (cf. 7c,10b)

# Psalm 24: King of Glory

Luke D. Rosen

Steadily  $\text{♩} = 80$   
Introduction





Trumpet in B $\flat$  I II

# Psalm 24: King of Glory

Revised Grail Psalter

Ps 24: 1-2,3-4ab,5-6 (cf. 7c,10b)

Luke D. Rosen

**Steadily**  $\text{♩} = 80$   
**Introduction**

9 **Cantor Refrain** 8 **Refrain**

25 **Verse 1,2** **Final Refrain**

40 **molto rit.**

Trombone I II

# Psalm 24: King of Glory

Revised Grail Psalter

Ps 24: 1-2,3-4ab,5-6 (cf. 7c,10b)

Luke D. Rosen

**Steadily** ♩ = 80  
**Introduction**

Measures 1-4 of the introduction. The music is in bass clef, 4/4 time, and D major. It begins with a whole rest, followed by eighth and quarter notes, and ends with a half note chord.

Measures 5-8 of the introduction. The music continues with eighth and quarter notes, ending with a half note chord.

Measures 9-16, labeled "Cantor Refrain" and "Refrain". Measure 9 is a whole rest with a "8" below it. The refrain begins in measure 10 with eighth and quarter notes.

Measures 17-24 of the Cantor Refrain. The music continues with eighth and quarter notes, ending with a half note chord.

Measures 25-32, labeled "Verse 1,2,3". Measure 25 is a whole rest with a "3" below it. Measure 26 has a triplet of eighth notes. Measure 27 is a whole rest with a "2" below it. Measures 28-32 consist of eighth and quarter notes.

Measures 33-37, labeled "Final Refrain". The music consists of eighth and quarter notes, ending with a half note chord.

Measures 38-41, labeled "Final Refrain". Measure 38 is a whole rest with a "3" below it. The music continues with eighth and quarter notes, ending with a half note chord. The tempo marking "molto rit." is placed above measure 39.

Tuba

# Psalm 24: King of Glory

Revised Grail Psalter

Ps 24: 1-2,3-4ab,5-6 (cf. 7c,10b)

Luke D. Rosen

**Steadily** ♩ = 80  
**Introduction**

9 **Cantor Refrain** 8 **Refrain**

25 **Verse 1,2,3** 2

33 **Refrain**

38 **molto rit.**

# Psalm 24: King of Glory

Violin I II

Revised Grail Psalter

Ps 24: 1-2,3-4ab,5-6 (cf. 7c,10b)

Luke D. Rosen

**Steadily** ♩ = 80  
**Introduction**

8 **Cantor Refrain**

13 **Refrain**

20

25 **Verse 1,2,3** **Final Refrain**

38 **molto rit.**