

Psalm 32: I Turn to You, Lord

Music by Luke D. Rosen

For Cantor, SATB Choir, Piano, Guitar

Instrument Parts:

- Flute
- Clarinet in B^b
- Alto Saxophone
- Tenor Saxophone
- Horn in F
- Trumpet in B^b I & II
- Trombone I & II
- Tuba
- Violin I & II

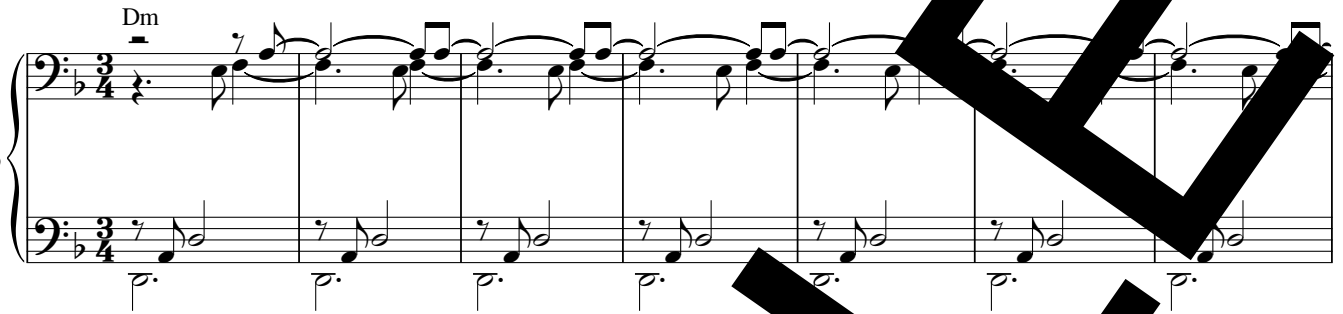
Responsorial Psalm for:
Sixth Sunday in Ordinary Time (B)

Psalm 32: I Turn to You, Lord

Luke D. Rosen

Steadily ♩ = 120
Introduction

Piano



The piano introduction consists of two staves in 3/4 time with a key signature of one flat. The upper staff features a Dm chord and a melodic line of eighth notes with slurs. The lower staff features a bass line of eighth notes with slurs. The piece concludes with a final Dm chord.

Cantor Refrain

Cantor

8

I turn to you, Lord, in time of

Pno.



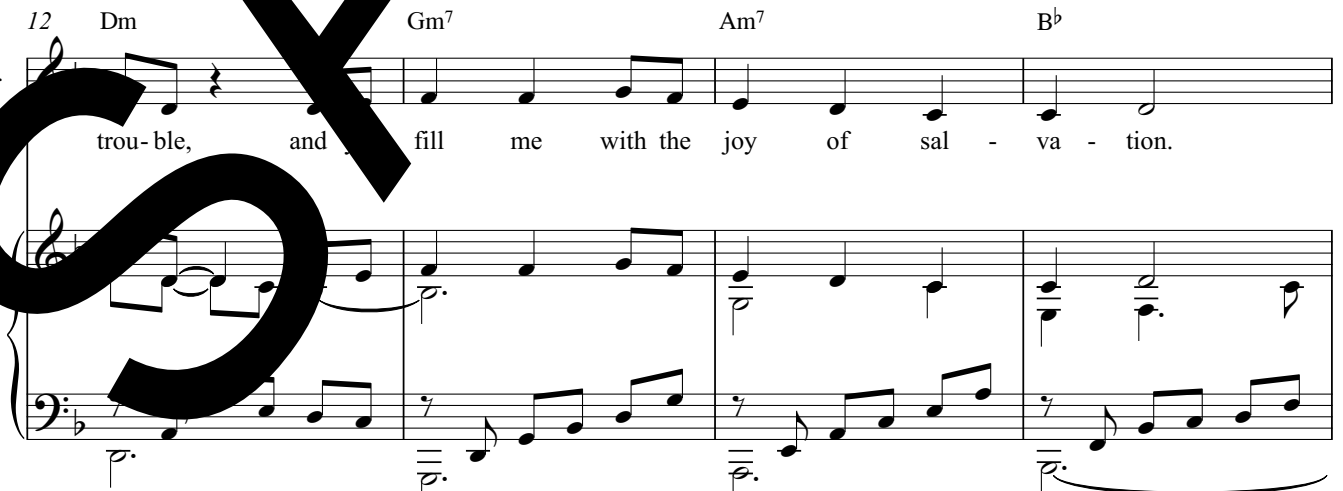
The cantor refrain begins at measure 8. The upper staff shows the vocal line with lyrics: "I turn to you, Lord, in time of". The lower staff shows the piano accompaniment. Chords C and Gm are indicated above the staff.

Cantor

12

trou-ble, and fill me with the joy of sal - va - tion.

Pno.



The cantor refrain continues from measure 12. The upper staff shows the vocal line with lyrics: "trou-ble, and fill me with the joy of sal - va - tion." The lower staff shows the piano accompaniment. Chords Dm, Gm7, Am7, and Bb are indicated above the staff.

Refrain

16 B^b// Dm C

Choir I turn to you, Lord, time of

Pno.

20 Dm Gm⁷ Am⁷ B^b

Choir trou-ble, and you fill with the joy of sal - va - tion.

Pno.

Verse 1,2

24 B^b// F Gm Dm Gm⁷

1. Bless - ed is he whose trans - gress - ion is for - giv - en, whose
to you have ac-know-ledged my sin; my guilt I

Pno.

30 Am⁷ B^b B^b// B^b F

sin is re - mit - ted. Bless - ed be the man to whom the
 did not hide. I said, "I will con - fess my trans -

Pno.

35 Gm Dm Gm⁷ Am⁷ B^b

LORD im - putes no guilt, whose spi - rit there is no guile.
 gress - ion to the LORD. "And you have for - given the guilt of my sin.

Pno.

Refrain

40 B^b// Dm C Gm

Choir I turn to you, Lord, in time of

Pno.

44 Dm Gm7 Am7

Choir
trou-ble, and you fill me with the joy of - va - tion.

Pno.

48 Verse 3 Bb// Gm// Dm

Choir
3. Re - joice in LORD, ex - ult you just!

Pno.

53 Gm7 Am7 Bb

Choir
out your joy all you up - right of heart!

Pno.

Final Refrain

59 B^b// Dm C Gm Dm

Choir I turn to you, Lord, in time of trouble, and you

Pno.

p. *p.* *p.* *mf.* *p.*

molto rit.

64 Gm⁷ Am⁷ B^b B^b//

Choir fill me with the joy of sal-va-tion.

Pno.

p. *p.* *p.* *p.* *p.* *p.*

SAMPLE

Psalm 32: I Turn to You, Lord

Luke D. Rosen

Steadily ♩ = 120
Introduction

Piano



Cantor Refrain

Cantor

8



I turn to you, Lord, in time of

Cantor

12



trou - ble, and you fill with the joy of sal - va - tion.

Refrain

Choir

16



I turn to you, Lord, in time of

Choir

20



trou - ble, and you fill me with the joy of sal - va - tion.

Verse 1,

24



...-ed is he whose trans-gress-ion is for - giv - en, whose

2. To you I have ac - know - ledged my sin; my guilt I

30 Am⁷ B^b B^b// B^b F

sin is re - mit - ted. Bless - ed the man to whom the
did not hide. I said, "I will con - m - ans -

35 Gm Dm Gm⁷ Am⁷ B^b

LORD im - putes no guilt, in whose it the guile.
gress - ion to the LORD." And you for - giv - the guilt of my sin.

Refrain

40 B^b// Dm Gm

Choir I turn to you Lord in time of

44 Dm Am⁷ B^b

Choir trou - ble, and me with the joy of sal - va - tion.

48 B^b// F Gm// Dm

Choir 3. Re - joice in the LORD, ex - ult you just!

53 Gm7 Am7 Gm7 B^b

Choir Ring out your joy, all you up - right of heart!

Final Refrain

59 B^b// Dm C Gm Dm

Choir I turn to you, Lord, in the heav - enly courts, and you

64 Gm7 Am7 *molto rit.* B^b//

Choir fill me with the joy of sal - va - tion.

SAMPLE

A Note on instrumentation for any Psalm Setting by Luke D. Rosen

1. Each psalm may be played with any combination of instruments with no obligation to use all instruments at all.
2. No dynamic markings are given in the scores: the composer wishes for the conductor or group/director to take liberties with dynamics and have them grow organically from the ensemble and the space.
3. The Horn in F and Trombone I parts double each other (unless otherwise noted in the score parts):

For Brass Quartet, use Trumpet I/II and Trombone I/II.

For Brass Quintet, use Trumpet I/II, Horn in F, Trombone II, and Tuba.

SAMPLE

Flute

Psalm 32: I Turn to You, Lord

Revised Grail Psalter
Ps 32:1-2,5,11 (7)

Luke D. Rosen

Steadily ♩ = 120
Introduction

3

9 **Cantor Refrain**

5

16 **Refrain**

3

23 **Verse 1**

14

41 **Refrain**

Verse 3

52

4

60 **Final Refrain**

9

molto rit.

Ps 32:1-2,5,11 (7). Refrain text © 1969, 1981, 1997, ICEL. All rights reserved. Used with permission.

Verse text © 2010, The Revised Grail Psalms, Conception Abbey and the Grail. All rights reserved. Used with permission.

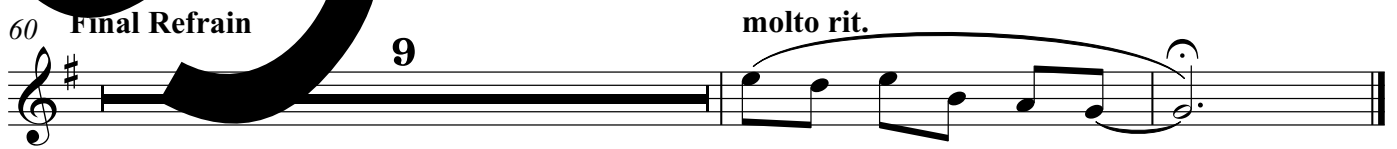
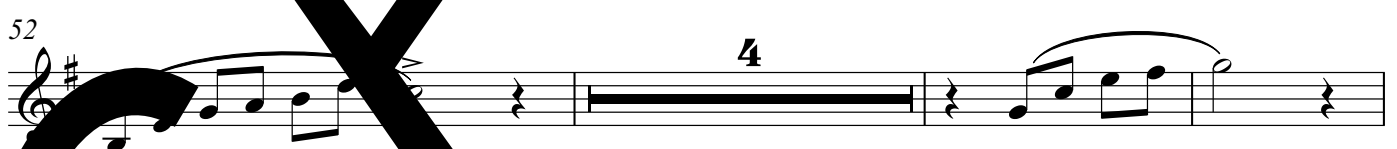
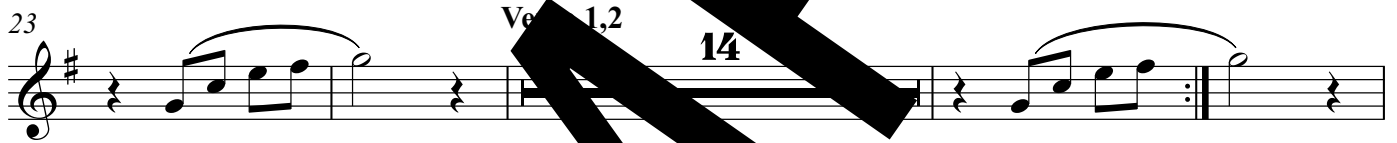
Music © 2015, Luke D. Rosen. All rights reserved.

Clarinet in B \flat
Revised Grail Psalter
Ps 32:1-2,5,11 (7)

Psalm 32: I Turn to You, Lord

Luke D. Rosen

Steadily $\text{♩} = 120$
Introduction



Alto Saxophone
Revised Grail Psalter
Ps 32:1-2,5,11 (7)

Psalm 32: I Turn to You, Lord

Luke D. Rosen

Steadily ♩ = 120
Introduction



SAMPLE

Tenor Saxophone

Psalm 32: I Turn to You, Lord

Revised Grail Psalter

Ps 32:1-2,5,11 (7)

Luke D. Rosen

Steadily ♩ = 120
Introduction

Musical notation for the introduction, starting with a treble clef, a key signature of one sharp (F#), and a 3/4 time signature. The melody consists of eighth and quarter notes, with some notes beamed together.

9 **Cantor Refrain** 5 **Refrain** 6

Musical notation for the Cantor Refrain, measures 9-14. It features a treble clef, a key signature of one sharp, and a 3/4 time signature. The melody is primarily quarter notes with some rests.

25 **Verse 1,2** 14

Musical notation for Verse 1 and 2, measures 25-38. It features a treble clef, a key signature of one sharp, and a 3/4 time signature. The melody is primarily quarter notes with some rests.

41 **Refrain** 7 **Verse 3**

Musical notation for the Refrain and Verse 3, measures 41-53. It features a treble clef, a key signature of one sharp, and a 3/4 time signature. The melody includes eighth notes and quarter notes.

54 **Final Refrain** 4 **Final Refrain** 9 **molto rit.**

Musical notation for the Final Refrain, measures 54-63. It features a treble clef, a key signature of one sharp, and a 3/4 time signature. The melody includes quarter notes and eighth notes, ending with a fermata and a 'molto rit.' marking.

Trumpet in B \flat I II Psalm 32: I Turn to You, Lord

Revised Grail Psalter
Ps 32:1-2,5,11 (7)

Luke D. Rosen

Steadily ♩ = 120
Introduction

5

Cantor Refrain

9 5

Refrain

16

25 **Verse 1,2**

14

41 **Refrain**

Verse 3

7

54

Final Refrain

molto rit.

4 9

Trombone I II

Psalm 32: I Turn to You, Lord

Revised Grail Psalter

Ps 32:1-2,5,11 (7)

Luke D. Rosen

Steadily ♩ = 120
Introduction

4

9 Cantor Refrain 5 Refrain 6

25 Verse 1,2 14

41 Refrain 7 Verse 3

54 Final Refrain 4

65 molto rit.

Ps 32:1-2,5,11 (7). Refrain text © 1969, 1981, 1997, ICEL. All rights reserved. Used with permission.

Verse text © 2010, The Revised Grail Psalms, Conception Abbey and the Grail. All rights reserved. Used with permission.

Music © 2015, Luke D. Rosen. All rights reserved.

Tuba

Psalm 32: I Turn to You, Lord

Revised Grail Psalter

Ps 32:1-2,5,11 (7)

Luke D. Rosen

Steadily ♩ = 120
Introduction

4

9 **Cantor Refrain** **Refrain**

5 6

25 **Verse 1,2** **Refrain**

14 7

49 **Verse 3**

4

60 **Final Refrain**

4 **molto rit.**

SAMPLE

Psalm 32: I Turn to You, Lord

Violin I II
Revised Grail Psalter
Ps 32:1-2,5,11 (7)

Luke D. Rosen

Steadily ♩ = 120
Introduction

3

9 Cantor Refrain

3

16 Refrain

23 Verse 1,

2

41 Refrain

47 Verse

53

60 Final Refrain

6

molto rit.