

I Shall Live
in the House of the Lord
Ps. 23

Gene Klosner
Light the Fire! Music
www.LTFMusic.com

Thank you for choosing **Cher & Gene Klosner's psalm series!**

All of our psalms are written in comfortable "congregational keys," and presented in SATB(+), but have been written so that all music ministry groups can use them, from soloist to duo, to contemporary praise teams (SAT), to full choirs. Also available in Soloist/Small Group format.

This PDF contains the following versions:

- Refrain Full Score + Verse chords (for director, piano accompanist)
- Refrain P/G/V + Verse chords (for piano accompanist)
- Refrain Lead Sheet + Verse chords (for cantor, guitar accompanist, piano "chorders" - similar to fake books)
- Refrain SSATB (for choir members)
- Verses Full Score (for cantor, accompanist)
- Refrain Assembly (for director, worship aid makers)

Format/order of performance:

- Solo cantor refrain melody*
- Choir and congregation respond in **unison** (melody) refrain
- Solo cantor verse
- Choir and congregation refrain with harmonies
- [Continue thru multiple verses and harmonized refrains]
- End with repeat of harmonized refrain (optional)

*The melody line is the soprano part (male cantor sings an octave below), unless otherwise indicated.

Verses are by **ONE cantor**, chant-style (non-metered, free rhythm) using either of the two melodies, depending on their vocal range. Verses are not designed for multiple singers or harmonies. This allows for the free interpretation of the text. For the **accompanist**, the rhythm resumes (a tempo) on the last word of each verse to bring choir and congregation in for the refrain, which then has **choir** harmonies from there on out.

We like to do a double refrain after the last verse to "close out" the song, so we use the turnaround accompaniment for repeating the refrain, then the Final ending at the very end.

Note to accompanist:

Follow the "turnaround" chords when repeating the refrain or when going into verses.

LTFM Psalm Tones:

Overall, we have 16 different melodies of psalm tones for the verses that get "mixed and matched" with all the hundreds of different psalm refrains throughout the 3-year cycle, one per psalm refrain. We give two options from which the cantor can choose, depending on the cantor's vocal range. Choose the smaller notes for the lower melody.

This way, a cantor doesn't have to learn hundreds of different verse melodies over the three-year cycle.

The particular psalm tones assigned to this refrain are Psalm Tone 1 in D, which starts a fifth up (Sol in solfege) from the end of the refrain, and Psalm Tone 2 in D, which starts up a third (Mi in solfege).

The cantor should also note that there are many configurations of the verse texts (all configurations are part of this PDF) connected to this refrain; be sure to check the top of the verse pages for the correct set of verses for the day.

Please report usage of this music to CCLI and/or OneLicense.

Other tips for "I Shall Live in the House of the Lord":

Cantor: Use with Psalm Tone 1 or 2 (in D). These are identical, by the way, to the verses for "The Lord Is My Shepherd."

Choir: Altos can choose to take the alto echo or just sing the S2 harmony. With a small group, the echo isn't needed.

Pretty much all the words in the melody (and non-echo harmonies) except "I" and "of" are on the offbeat.

Pianists: the G and A notes in the right hand in m. 5-6 and the A and B notes in m. 2 are to be both played with the thumb.

We recommend listening to the recordings of this psalm.

Musically yours,

Cher & Gene

DIFFICULTY LEVEL		
(easy/medium/advanced)		
melody	harmony	accompaniment
e	e	e

I Shall Live in the House of the Lord

Ps. 23

Triumphantly, Confidently, Driving

♩ = 114

Gene Klosner

Capo 2: C
D

Gsus⁴
Asus⁴

G

Piano

1

C
D

Gsus⁴
Asus⁴

G
A

Bm

E7sus⁴
Asus⁴

S
S

I _____ shall live _____ house _____ of the Lord _____

A

I shall _____ the house _____ in the house of the Lord

T
B

I _____ shall _____ in the house _____ of the Lord _____

Pno.

I Shall Live in the House of the Lord - Ps. 23

5

Fadd⁹
Gadd⁹

G⁷sus⁴
A⁷sus⁴

C
D

Csus⁴
G
A

1. turnarounds into repeated refrains D.S.

S
S
A
T
B

all the days of my life.

all my life.

all the days of my

Pno.

1. turnarounds into repeated refrains D.S.

C
D

Csus⁴
D

C
D

G
C

Csus⁴
D

C
D

2. interlude into verses 3. Final

S
S
A
T
B

2. interlude into verses 3. Final

Pno.

Verse chords (Psalm Tone 1 or 2), Piano/Guitar, no capo:

D | A | Em7 | F#7 (aug)* | Bm | Em7sus4 | A7sus4 |

Verse chords (Psalm Tone 1 or 2), Guitar, capo 2:

C | G | Dm7 | G | E7aug* | Am | Dm7sus4 | G7sus4 |

*augmented chord is optional

I Shall Live in the House of the Lord

Triumphantly, Confidently, Driving

Ps. 23

Gene Klosner

♩ = 114

Capo 2: C
D

Gsus⁴
Asus⁴

Piano

1 C D Gsus⁴ Asus⁴ G A Am⁷ Bm⁷ Em⁷ sus⁴ F#m⁷ sus⁴

Pno.

5 Fadd⁹ Gadd⁹ G⁷ sus⁴ A⁷ sus⁴ D Gsus⁴ Asus⁴ G A

Pno.

C D C sus⁴ D sus⁴ C D F/G G/A C D C sus⁴ D sus⁴ C D

Pno.

Verse chords (Psalm Tone 2), Piano/Guitar, no capo: Verse chords (Psalm Tone 1 or 2), Guitar, capo 2:

D | A | Em7 | A | F#7 (aug)* | Bm | Em7sus4 | A7sus4 | C | G | Dm7 | G | E7aug* | Am | Dm7sus4 | G7sus4 | *augmented chord is optional

I Shall Live in the House of the Lord

Ps. 23

Triumphantly, Confidently, Driving

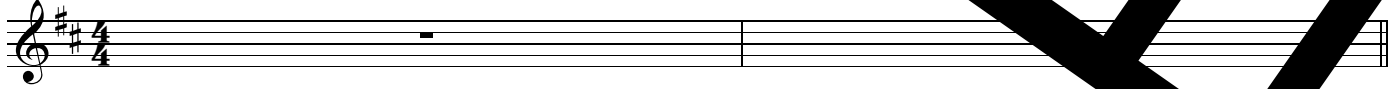
♩ = 114

Gene Klosner

Capo 2: C
D

Gsus⁴
Asus⁴

G
A



1

C
D

Gsus⁴
Asus⁴

G
A

F#7sus⁴
A7sus⁴

Em⁷sus⁴
A7sus⁴



I shall live in the house of the Lord

5
Fadd⁹
Gadd⁹

G⁷sus⁴
A⁷sus⁴

C
D

Gsus⁴
Asus⁴

G
A



all the days of my

1. turnarounds into repeated refrains

D.S.

C
D

Csus⁴
Dsus⁴

C
D

F/G
G/A

C
D

Csus⁴
Dsus⁴

C
D



2. interlude into verses

3. Final

Verse chords (Psalm Tone 1 or 2), Piano/Guitar, Capo:

D | A | Em7 | A |
F#7 (aug)* | Bm | Em7sus4 |

Verse chords (Psalm Tone 1 or 2), Guitar, capo 2:

C | G | Dm7 | G |
E7aug* | Am | Dm7sus4 | G7sus4 |

*augmented chord is optional

I Shall Live in the House of the Lord

Ps. 23

Triumphantly, Confidently, Driving

♩ = 114

Gene Klosner

NOTE: No harmonies until after 1st verse; follow Soprano line for melody. See [] at below.

1

S
S
I _____ shall live _____ in the house _____ of the Lord _____

A
I shall live in the house _____ in the house of the Lord

T
B
I _____ shall live _____ house _____ of the Lord _____

5

S
S
all _____ the _____ life. _____

A
_____ all _____ my life. _____

T
B
the days of _____ my life. _____

Form

- Solo cantor refrain
- Choir and congregation response **unison (melody) refrain**
- Solo cantor

- Choir and congregation refrain with harmonies
- [Continue thru multiple verses and harmonized refrains]
- End with repeat of harmonized refrain (optional)

*The melody line is the soprano part (male cantor sings an octave below).

I Shall Live in the House of the Lord Verses

Ps. 23:1-3a, 3b-4, 5, 6 / Psalm Tones 1 & 2 in D

28th Sunday in Ordinary Time A / Wednesday of the 1st Week of Advent

Freely chanted, non-metered, solo cantor only

Cherub Klosner-Larson, Gene Klosner

Capo 2: C D G A Dm⁷ Em⁷ G A

PT 1/2*
*opt. lower melody

1. The LORD is my shepherd; I shall not want. In verdant pastures he gives me repose;
2. He guides me in right paths for his name's sake. Even though I walk in the dark valley I fear no evil;
3. You spread the table before me the sight of my foes;
4. Only goodness and kindness follow me days of my life;

Piano

3 1/2

E⁷aug F⁷aug Bm⁷ Dm⁷sus⁴ Em⁷sus⁴

1. beside restful waters he refreshes me; he refreshes my
2. for you are at my side with your rod and your staff that give me
3. you anoint my head with oil; my cup over-
4. and I shall dwell in the house of the LORD for years to

Pno.

♩ = 114 5

G⁷sus⁴ A⁷sus⁴ a tempo G A

1. soul.
2. cour - age.
3. flo -
4. tempo

Pno.

I Shall Live in the House of the Lord

Ps. 23

Gene Klosner

The image shows a musical score for the song 'I Shall Live in the House of the Lord'. It consists of two staves of music in G major (one sharp) and 4/4 time. The lyrics are: 'I shall live in the house of the Lord all the days of my life.' The first staff contains the first line of the melody, and the second staff contains the second line. The music is written in a simple, accessible style suitable for a church service.

The English translation of Psalm Response from *Lectionary for Mass* © 1969, 1981, 1997, International Commission on English in the Liturgy Corporation. All rights reserved.
Music: Copyright © 1999 Light the Fire! Music (ASCAP). All rights reserved. Used with permission. www.LightTheFireMusic.com

Use for:

28th Sunday in Ordinary Time A (ord28A)
Wednesday of the 1st Week of Advent (adv1We)

Use with Psalm Tone 1 or 2 in D

Text version:

I Shall Live in the House of the Lord (Ps. 23) (Gene Klosner)

I shall live in the house of the Lord all the days of my life.

Psalm refrain Copyright © 1968, 1981, 1997 International Committee on English in the Liturgy, Inc. (ICEL). All rights reserved.
Music Copyright © 1999 Light the Fire! Music. All rights reserved. Used with permission.

This psalm rendition is USCCB-approved and may be used in Verbatim Responses and verses.

Report usage to CCLI and/or OneLicense.

CCLI Song #7149656

OneLicense Song ID: islithotl23v1