

# Psalm 113: Praise the Lord

Music by Luke D. Rosen

For Cantor, SATB Choir, Piano, Guitar

Instrument Parts:

- Flute
- Clarinet in B<sup>b</sup>
- Alto Saxophone
- Tenor Saxophone
- Horn in F
- Trumpet in B<sup>b</sup> I & II
- Trombone I & II
- Tuba
- Violin I & II

Responsorial Psalm for:  
Twenty-Fifth Sunday in Ordinary Time (C)

# Psalm 113: Praise the Lord

Flowing ♩ = 65  
Introduction

Capo 1: (E)  
F

(Bm)  
Cm

Piano

(Gmaj7)  
3 A<sup>b</sup>maj7

Pno.

(E)  
5 F

(Bm)  
Cm

Pno.

(Gmaj7)  
7 A<sup>b</sup>maj7

(E)  
F

(Bm)  
Cm

(E)  
9 F

(Bm)  
Cm

Cantor

Praise the Lord who

Ps 113: 1-2,4-6,7-8 (cf. 1a, 7b). Refrain text © 1969, 1981, 1997, ICEL. All rights reserved. Used with permission.

Verse text: *The Abbey Psalms and Canticles*, prepared by the monks of Conception Abbey

© 2018, 2010 United States Conference of Catholic Bishops, Washington, DC.

Used with permission. All rights reserved.

Music © 2013, Luke D. Rosen. All rights reserved.

11 (Gmaj<sup>7</sup>) (E)  
A<sup>b</sup>maj<sup>7</sup> F

Cantor lifts up the poor.

Pno.

**Refrain (or Alleluia)**

13 (E) (Bm)  
F

Choir Praise Lo who

Pno.

15 (Gmaj<sup>7</sup>) (E)  
A<sup>b</sup>maj<sup>7</sup> F

Choir lifts up the poor.

Pno.

Verse 1,2,3

(Bm)  
Cm

17

1. Praise, O ser - vants of the LORD, praise the name of the  
2. High a - bove all na - tions is the LORD, a-bove hea - vens his  
3. From the dust he lifts up the low - ly, from the ash heap he rais - the

Choir

Pno.

Ah

19

(E)  
F

LORD!  
glo - ry. Who is the LORD, our God, who dwells on  
poor, to  
May the

Choir

Pno.

21 (Bm)  
Cm

name of the LORD be blest both now and ev - er -  
 high, who low - ers him - self to look down  
 set them in the com - pan - y of prin - ces, yes, with the prin - ces his

Choir

Pno.

23 (E)  
F

more!  
 earth?  
 peo - ple.

Choir

Pno.

Final Refrain (or Alleluia)

25 (E) F (Bm) Cm

Choir

Praise the Lord who

Pno.

27 (Gmaj7) A<sup>b</sup>maj7

Choir

lifts up the

Pno.

29 (Bm) Cm (E) F

Pno.

31

(Bm)  
Cm

(E)  
F

Pno.

33

(Bm//)  
Cm//

(G//)  
A<sup>b</sup>//

(E//)  
F//

(D//)  
E<sup>b</sup>//

(B//)  
C//

Pno.

SAMPLE

# Psalm 113: Praise the Lord

**Flowing** ♩ = 65  
**Introduction**

Capo 1: (E) F (Bm) Cm

Piano

3 (Gmaj7) A<sup>b</sup>maj7

Pno.

5 (E) F (Bm) Cm

Pno.

7 (Gmaj7) A<sup>b</sup>maj7 (E) F

Pno.

**Cantor Refrain (or Antiphonia)**

9 (E) F (Bm) Cm (Gmaj7) A<sup>b</sup>maj7 (E) F

Cantor

Praise Lord who lifts up the poor.

Ps 113: 1-2,4-6,7-8 (cf. 1a, 7b). Refrain text © 1969, 1981, 1997, ICEL. All rights reserved. Used with permission.

Verse text: *The Abbey Psalms and Canticles*, prepared by the monks of Conception Abbey

© 2018, 2010 United States Conference of Catholic Bishops, Washington, DC.

Used with permission. All rights reserved.

Music © 2013, Luke D. Rosen. All rights reserved.



Refrain (or Alleluia)

2

13 (E) F (Bm) Cm (Gmaj7) A<sup>b</sup>maj7 (E) F

Choir

Praise the Lord who lifts up poor

Verse 1,2,3

17 (Bm) Cm (E) F

Choir

1. Praise, O ser-vants of the LORD, the name of the LORD

2. High a - bove all na - tions is the LORD, a - bove the heav - ens his glo - ry. Who is like the

3. From the dust he lifts up the lowly, from the ash he rais - es the poor,

Ah - hm

20 (Bm) Cm

Choir

May the name of the LORD be blest both

LORD, our God, who dwells on high, who low - ers him - self to look

to set them in the com - pan - y of prin - ces,

now and for - ev - er - more!

down up - on heav - en and earth?

yes, with the prin - ces of his peo - ple.

Choir Ah

**Final Refrain (or Alleluia)**

25 (E) F (Bm) Cm (E) F

Choir Praise the Lord who up the poor.

29 (Bm) Cm (E) F

Pno.

31 (Bm) Cm (E) F

Pno.

35 (Bm//) Cm// (G//) A^b// (E//) F// (D//) E^b// (B//) C//

Pno.

## A Note on instrumentation for any Psalm Setting by Luke D. Rosen

1. Each psalm may be played with any combination of instruments with no obligation to use all instruments at all.
2. No dynamic markings are given in the scores: the composer wishes for the conductor or group/director to take liberties with dynamics and have them grow organically from the ensemble and the space.
3. The Horn in F and Trombone I parts double each other (unless otherwise noted in the score parts):

For Brass Quartet, use Trumpet I/II and Trombone I/II.

For Brass Quintet, use Trumpet I/II, Horn in F, Trombone II, and Tuba.

**SAMPLE**

Flute

# Psalm 113: Praise the Lord

The Abbey Psalms and Canticles  
Ps 113: 1-2,4-6,7-8 (cf. 1a, 7b)

Luke D. Rosen

Flowing ♩ = 65  
Introduction

3

7 Cantor Refrain 3

13 Refrain

17 Verse 1,2,3 2

24 Final

28

Ps 113: 1-2, 4-6, 7-8 (cf. 1a, 7b). Refrain text © 1969, 1981, 1997, ICEL. All rights reserved. Used with permission.  
Verse text: *The Abbey Psalms and Canticles*, prepared by the monks of Conception Abbey  
© 2018, 2010 United States Conference of Catholic Bishops, Washington, DC.  
Used with permission. All rights reserved.  
Music © 2013, Luke D. Rosen. All rights reserved.

Clarinet in B $\flat$   
The Abbey Psalms and Canticles  
Ps 113: 1-2,4-6,7-8 (cf. 1a, 7b)

# Psalm 113: Praise the Lord

Luke D. Rosen

Flowing  $\text{♩} = 65$   
Introduction

4

7

9 Cantor Refrain 3 Refrain

15

17 Verse 1, 2

Ps 113: 1-2, 4-6, 7-8 (cf. 1a, 7b). Refrain text © 1969, 1981, 1997, ICEL. All rights reserved. Used with permission.  
Verse text: *The Abbey Psalms and Canticles*, prepared by the monks of Conception Abbey  
© 2018, 2010 United States Conference of Catholic Bishops, Washington, DC.  
Used with permission. All rights reserved.  
Music © 2013, Luke D. Rosen. All rights reserved.

**Final Refrain**

25

27

30

32

**SAMPLE**

Alto Saxophone

# Psalm 113: Praise the Lord

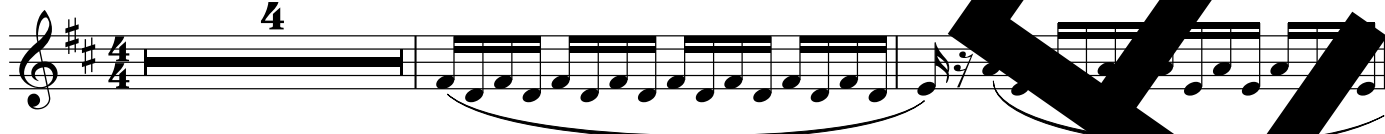
The Abbey Psalms and Canticles

Luke D. Rosen

Ps 113: 1-2,4-6,7-8 (cf. 1a, 7b)

Flowing ♩ = 65  
Introduction

4



Ps 113: 1-2,4-6,7-8 (cf. 1a, 7b). Refrain text © 1969, 1981, 1997, ICEL. All rights reserved. Used with permission.

verse text: *The Abbey Psalms and Canticles*, prepared by the monks of Conception Abbey

© 2018, 2010 United States Conference of Catholic Bishops, Washington, DC.

Used with permission. All rights reserved.

Music © 2013, Luke D. Rosen. All rights reserved.

25 Final Refrain

SAMPLE



Tenor Saxophone

# Psalm 113: Praise the Lord

The Abbey Psalms and Canticles

Ps 113: 1-2,4-6,7-8 (cf. 1a, 7b)

Luke D. Rosen

Flowing ♩ = 65

Introduction

4

7

9 Cantor Refrain 3 Refrain

15

17 Verse 1,2

Ps 113: 1-2,4-6,7-8 (cf. 1a, 7b). Refrain text © 1969, 1981, 1997, ICEL. All rights reserved. Used with permission.

Verse text: *The Abbey Psalms and Canticles*, prepared by the monks of Conception Abbey

© 2018, 2010 United States Conference of Catholic Bishops, Washington, DC.

Used with permission. All rights reserved.

Music © 2013, Luke D. Rosen. All rights reserved.



Horn in F

# Psalm 113: Praise the Lord

The Abbey Psalms and Canticles

Luke D. Rosen

Ps 113: 1-2,4-6,7-8 (cf. 1a, 7b)

Flowing ♩ = 65

Introduction

4

9 Cantor Refrain

Refrain

4

17 Verse 1,2,3

25 Final Refrain

30

Ps 113: 1-2, 4-6, 7-8 (cf. 1a, 7b). Refrain text © 1969, 1981, 1997, ICEL. All rights reserved. Used with permission.

Verse text: *The Abbey Psalms and Canticles*, prepared by the monks of Conception Abbey

© 2018, 2010 United States Conference of Catholic Bishops, Washington, DC.

Used with permission. All rights reserved.

Music © 2013, Luke D. Rosen. All rights reserved.

Trumpet in B $\flat$  I II

# Psalm 113: Praise the Lord

The Abbey Psalms and Canticles

Ps 113: 1-2,4-6,7-8 (cf. 1a, 7b)

Luke D. Rosen

**Flowing** ♩ = 65

**Introduction**

4

9 **Cantor Refrain** **Refrain**

4

17 **Verse 1,2,3**

25 **Final Refrain**

30

Ps 113: 1-2,4-6,7-8 (cf. 1a, 7b). Refrain text © 1969, 1981, 1997, ICEL. All rights reserved. Used with permission.

Verse text: *The Abbey Psalms and Canticles*, prepared by the monks of Conception Abbey

© 2018, 2010 United States Conference of Catholic Bishops, Washington, DC.

Used with permission. All rights reserved.

Music © 2013, Luke D. Rosen. All rights reserved.

Trombone I II

# Psalm 113: Praise the Lord

The Abbey Psalms and Canticles

Ps 113: 1-2,4-6,7-8 (cf. 1a, 7b)

Luke D. Rosen

**Flowing** ♩ = 65  
**Introduction**

4

9 **Cantor Refrain** **Refrain**

4

17 **Verse 1,2,3**

25 **Final Refrain**

30

Ps 113: 1-2, 4-6, 7-8 (cf. 1a, 7b). Refrain text © 1969, 1981, 1997, ICEL. All rights reserved. Used with permission.

Verse text: *The Abbey Psalms and Canticles*, prepared by the monks of Conception Abbey

© 2018, 2010 United States Conference of Catholic Bishops, Washington, DC.

Used with permission. All rights reserved.

Music © 2013, Luke D. Rosen. All rights reserved.

Tuba

# Psalm 113: Praise the Lord

The Abbey Psalms and Canticles

Ps 113: 1-2,4-6,7-8 (cf. 1a, 7b)

Luke D. Rosen

Flowing ♩ = 65  
Introduction

4

9 Cantor Refrain 4 Refrain

17 Verse 1,2,3

25 Final Refrain

30

Ps 113: 1-2, 4-6, 7-8 (cf. 1a, 7b). Refrain text © 1969, 1981, 1997, ICEL. All rights reserved. Used with permission.

Verse text: *The Abbey Psalms and Canticles*, prepared by the monks of Conception Abbey

© 2018, 2010 United States Conference of Catholic Bishops, Washington, DC.

Used with permission. All rights reserved.

Music © 2013, Luke D. Rosen. All rights reserved.

# Psalm 113: Praise the Lord

Violin I II

The Abbey Psalms and Canticles

Ps 113: 1-2,4-6,7-8 (cf. 1a, 7b)

Luke D. Rosen

Flowing  $\text{♩} = 65$   
Introduction

9 Cantor Refrain

13 Refrain

16 Vers 1,2,3

Ps 113: 1-2,4-6,7-8 (cf. 1a, 7b). Refrain text © 1969, 1981, 1997, ICEL. All rights reserved. Used with permission.

Verse text: *The Abbey Psalms and Canticles*, prepared by the monks of Conception Abbey

© 2018, 2010 United States Conference of Catholic Bishops, Washington, DC.

Used with permission. All rights reserved.

Music © 2013, Luke D. Rosen. All rights reserved.

Final Refrain

25

29

32

SAMPLE