

# You Are My Inheritance

*Ps. 16*

Cherolyn Klosner Lane

Light the Fire! Music

*www.LTFMusic.com*

Thank you for choosing **Cher & Gene Klosner's psalm series!**

All of our psalms are written in comfortable "congregational keys," and presented in SATB(+), but have been written so that all music ministry groups can use them, from soloist to duo, to contemporary praise teams (SAT), to full choirs. Also available in Soloist/Small Group format.

**This PDF contains the following versions:**

- Refrain Full Score + Verse chords (for director, piano accompanist)
- Refrain P/G/V + Verse chords (for piano accompanist)
- Refrain Lead Sheet + Verse chords (for cantor, guitar accompanist, piano "chorders" - similar to fake books)
- Refrain SATB (for choir members)
- Verse P/G/V (for cantor, accompanist) - different sets of verses for different uses
- Refrain Assembly (for director, worship aid makers)

**Format:**

- Solo cantor refrain melody\*
- Choir and congregation respond in **unison** (melody) refrain
- Solo cantor verse
- Choir and congregation refrain with harmonies
- [Continue thru multiple verses and harmonized refrains]
- End with repeat of harmonized refrain (optional)

\*The melody line is the **soprano** part (male cantor sings an octave below), unless otherwise indicated.

Verses are by ONE **cantor**, chant-style (non-metered, free rhythm) using either of the two melodies, depending on their vocal range. Verses are not designed for multiple singers or harmonies.

For the **accompanist**, the rhythm resumes (a tempo) on the last word of each verse to bring choir and congregation in for the refrain, which then has **choir** harmonies from there on out.

We like to do a double refrain after the last verse to "close out" the song, so we use the turnaround accompaniment for repeating the refrain, then the Final ending at the very end.

**Note to accompanist:**

Follow the "turnaround" chords when repeating the refrain (refer to recording).  
Use the "interlude into verses" when going into verses.

**Psalm Tones:**

Overall, we have 16 different melodies of psalm tones for the verses that get "mixed and matched" with all the hundreds of different psalm refrains throughout the 3-year cycle, one per psalm refrain. We normally give two options from which the cantor can choose, depending on the cantor's vocal range; for this psalm, we give one psalm tone choice, but a few lower notes if needed. Choose the smaller notes for the lower melody.

This way, a cantor doesn't have to learn hundreds of different verse melodies over the three-year cycle.

The particular psalm tone assigned to this refrain is Psalm Tone 8 in Dm, which starts up a fifth from the end of the refrain (Mi in solfege on the **major** scale, not the minor).

**Please report usage of this music to CCLI and/or OneLicense.**

**Other tips for the vocalists on "You Are My Inheritance":**

**Solo Cantor:** Use with Psalm Tone 8 (in Dm). The Lead Sheet and PGV refrains are presented in treble clef for simplicity.

**All Singers:** Be mindful to pronounce the short "i" in "inheritance" correctly: "in-hair-ih-tense," **not** "in-hair-uh-tense" **nor** "in-hair-ee-tense." (Also, make sure "-tense" doesn't come out as "-tinse," or "-tanse" or "-tunse.")

**Guitarists:** in the verses, you can choose to add the B bass to your Dm6 or not.

We strongly recommend listening to the recordings of this psalm.

Musically yours,

Cher & Gene

DIFFICULTY LEVEL		
(easy/medium/advanced)		
melody	harmony	accompaniment
e	e	e

# You Are My Inheritance

Ps. 16

Cherolyn Klosner-Lane

♩ = 88  
Haunting

Capo 5: Am Dm G% C% Fmaj7 Bbmaj7 Em7 Am7

Piano

1 Am Dm G% C% Fmaj7 Bbmaj7 Em7 Am7 A Dm G% C% Fmaj7 Bbmaj7 Em7 Am7

S  
A  
T  
B

You are my in - her - i - tance, Lord  
You are my in - her - i - tance, O

Pno.

5 Am Dm G% C% Bbmaj7 Am7 sus4 A D A D

S  
A  
T  
B

You are my in - her - i - tance, O Lord.  
Lord, my in - her - i - tance, O Lord.

P

1. turnaround into repeated refrains and interlude into verses | 2. Final



Verses chords (Psalm Tone 8), Piano/Guitar, no capo:

Am | Am7 | Gm7 | A7 |  
Bbmaj7 | Fadd9/A | Gm6/E | A7sus4 |

Verse chords (Psalm Tone 8), Guitar, capo 5:

Am | Em7 | Dm7 | E7 |  
Fmaj7 | Cadd9/E | Dm6/B | E7sus4 |

# You Are My Inheritance

Ps. 16

Cherolyn Klosner-Lane

♩ = 88  
Haunting

Capo 5: Am Dm G<sup>6</sup>/<sub>9</sub> C<sup>6</sup>/<sub>9</sub> Fmaj<sup>7</sup> B<sup>b</sup>maj<sup>7</sup> Em<sup>7</sup> Am<sup>7</sup>

Piano

1 Am Dm G<sup>6</sup>/<sub>9</sub> C<sup>6</sup>/<sub>9</sub> Fmaj<sup>7</sup> B<sup>b</sup>maj<sup>7</sup> Em<sup>7</sup> Am<sup>7</sup> Am<sup>7</sup> Dm G<sup>6</sup>/<sub>9</sub> C<sup>6</sup>/<sub>9</sub> Fmaj<sup>7</sup> B<sup>b</sup>maj<sup>7</sup> Em<sup>7</sup> Am<sup>7</sup>

Pno.

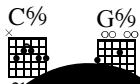
You are my in - her - i - tance, Lord

5 Am Dm G<sup>6</sup>/<sub>9</sub> C<sup>6</sup>/<sub>9</sub> Fmaj<sup>7</sup> B<sup>b</sup>maj<sup>7</sup> Em<sup>7</sup> Am<sup>7</sup> Dm G<sup>6</sup>/<sub>9</sub> C<sup>6</sup>/<sub>9</sub> Fmaj<sup>7</sup> B<sup>b</sup>maj<sup>7</sup> Em<sup>7</sup> Am<sup>7</sup> A D A D

Pno.

You are my in - her - i - tance, Lord.

1. turnaround into repeated refrains and interlude into verses | 2. Final



Verse chords (Psalm Tone 8), Piano/Guitar, no capo:

Dm | Am<sup>7</sup> | A7 |  
Fmaj<sup>7</sup> | Cadd9/A | Gm6/E | E7sus4 |

Verse chords (Psalm Tone 8), Guitar, capo 5:

Am | Em<sup>7</sup> | Dm<sup>7</sup> | E7 |  
Fmaj<sup>7</sup> | Cadd9/E | Dm6/B | E7sus4 |

# You Are My Inheritance

Ps. 16

Cherolyn Klosner-Lane

♩ = 88  
Haunting

1 *Am* *G%* *Fmaj7* *Em7* *Am* *G%* *Fmaj7* *Em7*  
*Dm* *C%* *Bbmaj7* *Am7* *Dm* *C%* *Bbmaj7* *Am7*

You are my in - her - i - tance, O Lord, A  
 You are my in - her - i - tance, Lord, A  
 You are my in - her - i - tance, Lord, D

5 *Am* *G%* *Fmaj7* *Em7* | 1. Around the world | 2. Final  
*Dm* *C%* *Bbmaj7* *Am7* | repeat refrain | intercessions

You are my in - her - i - tance, Lord

*C%*  
  
 21134

*G%*  
  
 3 2

Verse chords (Psalm Tone 8), Piano/Guitar, no capo:

*Dm* | *Am7* | *Gm7* | *A7* |  
*Bbmaj7* | *Fadd9/A* | *Gm6/E* | *A7sus4* |

Verse chords (Psalm Tone 8), Guitar, capo 5:

*Am* | *Em7* | *Dm7* | *E7* |  
*Fmaj7* | *Cadd9/E* | *Dm6/B* | *E7sus4* |

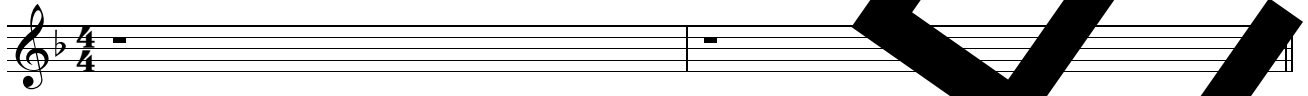
# You Are My Inheritance

Ps. 16

Cherolyn Klosner-Lane

♩ = 88  
Haunting

NOTE: No harmonies until after 1st verse; follow Soprano line for melody. See format below.



1

S  
A

T  
B

5

S  
A

T  
B

1. turnaround into repeated refrains and interlude into verses | 2. Final

### Format:

- Solo cantor refrain melody\*
- Choir and congregation respond in **unison** (male cantor refrain)
- Solo cantor verse
- Choir and congregation respond with harmonies
- [Continue thru multiple verses and choruses and refrains]
- End with repeat of harmonized refrain (optional)

\*The melody line is the soprano part (male cantor sings an octave below).

# You Are My Inheritance verses

Ps. 16: 5, 8, 9-10, 11 / Psalm Tone 8 in Dm

Easter Vigil (w/Reading II) / 33rd Sunday in Ordinary Time B / Graduals

Freely chanted, non-metered, solo cantor only

Cherubim Klosner-Lara, Gene Klosner

Capo 5: Am Dm Em<sup>7</sup> Dm<sup>7</sup> /sus<sup>4</sup> E<sup>7</sup>  
Am<sup>7</sup> Gm<sup>7</sup> A<sup>7</sup>/sus<sup>4</sup>

PT 8  
w/opt. lower melody

Piano

1. O LORD, my allotted portion and my cup, you it is who hold fast my  
2. Therefore my heart is glad and my soul re - joi - ces, my body, too, a - bides in your confidence;  
3. You will show me the path to life, fullness of joys in your pres - ence,

3 Fmaj<sup>7</sup> Cadd<sup>9</sup> Dm<sup>6</sup>/B Fadd<sup>9</sup>/A Dm<sup>6</sup>/E

8 B<sup>b</sup>maj<sup>7</sup> Fadd<sup>9</sup>/A Dm<sup>6</sup>/E

Pno.

1. I set the LORD ever be - fore me, with him at my right hand I shall not be dis -  
2. because you will not abandon my soul to the neth - er world, nee - ver will you suffer your faithful one to under - go cor -  
3. the de - lights at your right hand at your right hand for -

5 E<sup>7</sup>/sus<sup>4</sup> E A<sup>7</sup>/sus<sup>4</sup> *rit. poco* E F#m<sup>7</sup> E/G# Bm<sup>7</sup> A/C#

8

Pno.

1. turbed.  
2. rup - tion.  
3. ev - er.

To m. 1 of refrain...

*You Are My Inheritance* verses  
 Ps. 16: 1-2, 5, 7-8, 9-10, 11 / Psalm Tone 8 in Dm  
 13th Sunday in Ordinary Time C

Freely chanted, non-metered, solo cantor only

Cherol Klosner-Lan Gene Klosner

Capo 5: Am Dm Em<sup>7</sup> Am<sup>7</sup> Dm<sup>7</sup> Gm<sup>7</sup> E<sup>7</sup>/sus<sup>4</sup> E<sup>7</sup> A<sup>7</sup>/sus<sup>4</sup> A<sup>7</sup>

PT 8  
 w/opt. lower melody

Piano

1. Keep me, O God, for in you I take ref-uge; I say to the LORD, "My De-liv-er-er are you.  
 2. I bless the LORD who coun-sels me; even in the night my heart is comforted.  
 3. Therefore my heart is glad and my soul re-joices, my body, too, abides in con-fidence  
 4. You will show me the path to life, the paths of joys in your pres-ence,

3 Fmaj<sup>7</sup> B<sup>b</sup>maj<sup>7</sup> Cadd<sup>9</sup> Fadd<sup>9</sup>/A Dm<sup>6</sup>/B<sup>b</sup> Fadd<sup>9</sup>/A

8

1. O LORD, my allot-ted por-tion and my cup, it is who hold fast my  
 2. I set the LORD ever be-fore me, with him at my right hand I shall not be dis-  
 3. because you will not abandon my soul to the neth-er-world, nor will you suffer your faith-ful one to under-go cor-  
 4. the de-lights at your right hand at your right hand for-

Pno.

♩ = 88

5 E<sup>7</sup>/sus<sup>4</sup> A<sup>7</sup>/sus<sup>4</sup> tempo E F<sup>#</sup>m<sup>7</sup> E/G<sup>#</sup> A Bm<sup>7</sup> A/C<sup>#</sup>

8

1. lot."  
 2. turbed.  
 3. rup - tion.  
 4. ex -

Pno.

To m. 1 of refrain...



# You Are My Inheritance verses

Ps. 16: 1b-2a and 5, 7-8, 9-10 / Psalm Tone 8 in Dm  
Saturday of the 12th Week in Ordinary Time (II)

Freely chanted, non-metered, solo cantor only

Cherol Klosner-Lan Gene Klosner

Capo 5: Am Dm Em<sup>7</sup> Am<sup>7</sup> Dm<sup>7</sup> Gm<sup>7</sup> E<sup>7</sup> A<sup>7</sup> sus<sup>4</sup> A<sup>7</sup> sus<sup>4</sup> E<sup>7</sup>

PT 8  
w/opt. lower melody

1. Keep me, O God, for in you I take refuge; I say to the LORD, "My LORD is you.  
2. I bless the LORD who counsels me; even in the night my heart is comforted.  
3. Therefore my heart is glad and my soulre-joices, my body, too, abides in confidence;

Piano

3 8

Fmaj<sup>7</sup> B<sup>b</sup>maj<sup>7</sup> Cadd<sup>9</sup> Fadd<sup>9</sup>/A Dm<sup>6</sup>/B<sup>b</sup> Dm<sup>6</sup>/B<sup>b</sup>

1. O LORD, my allot- ted portion and my cup, you are it is who hold fast my  
2. I set the LORD ever be-fore me, with him at my right hand I shall not be dis-  
3. because you will not abandon my soul to the neth-er world, nor will you suffer your faithful one to under-go cor-

Pno.

♩ = 88

5 8

E<sup>7</sup>sus<sup>4</sup> A<sup>7</sup>sus<sup>4</sup> *tempo* E F<sup>#</sup>m<sup>7</sup> E/G<sup>#</sup> A Bm<sup>7</sup> A/C<sup>#</sup>

1. 'I am not troubled.'  
2. 'I am not troubled.'  
3. 'I am not troubled.'

Pno.

To m. 1 of refrain...

# You Are My Inheritance verses

Ps. 16: 1b-2a and 5, 7-8, 9-10 / Psalm Tone 8 in Dm

Saturday of the 19th Week in Ordinary Time (I) / Friday of the 23rd Week in Ordinary Time (I) /

January 17 / February 21 / April 2 / June 21 / August 11 / October 4 / October 27

Common of Pastors / Common of Holy Men and Women / For Priests / For Vocations / For Candidacy / For Diaconate and Priesthood  
(for more specific usage info, see Assembly page)

Freely chanted, non-metered, solo cantor only

Christylyn Klosner-Joseph/Gene Klosner

Capo 5: Am Dm Em7 Am7 Dm7 Gm7 E7sus4 A7sus4

PT 8  
w/opt. lower melody

1. Keep me, O God, for in you I take ref - uge; I say to the LORD, "My LORD are  
2. I bless the LORD who coun - sels me; even in the night my heart ex - horts me.  
3. You will show me the path to life, in the land of joys in your pres - ence,

Piano

3 Fmaj7 Bbmaj7 Cadd9/E Cadd9/A Dm6/B Dm6/E

8

1. O LORD, my allot - ted portion and my cup, you it is who hold fast my  
2. I set the LORD ever be - fore me; with him at my right hand I shall not be dis -  
3. the LORD de - lights at your right hand, your right hand for

Pno.

♩ = 88

5 E7sus4 A7sus4 E F#m7 E/G# A Bm7 A/C#

1. lot.  
2. turbed  
3.

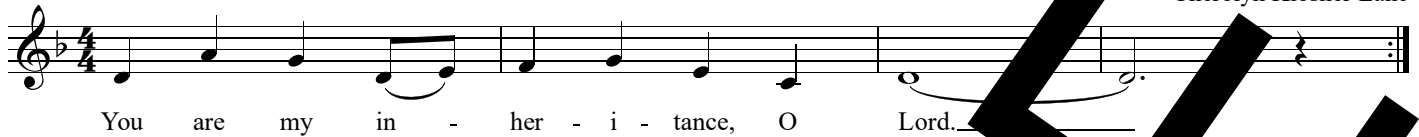
Pno.

To m. 1 of refrain...

# You Are My Inheritance

Ps. 16

Cherolyn Klosner Lane



The English translation of Psalm Response from *Lectionary for Mass* © 1969, 1981, 1997, International Commission on English in the Liturgy, Inc. (ICEL). All rights reserved.  
Music Copyright © 2000 Light the Fire! Music (ASCAP). All rights reserved. Used with permission. [www.LighttheFire.com](http://www.LighttheFire.com)

## Use for:

- Easter Vigil ABC (w/Reading II) (eastvigABC)
- 13th Sunday in Ordinary Time C (ord13C)
- 33rd Sunday in Ordinary Time B (ord33B)
- Saturday of the 10th Week in Ordinary Time (II) (ord10SaII)
- Saturday of the 19th Week in Ordinary Time (I) (ord19SaI)
- Friday of the 23rd Week in Ordinary Time (I) (ord23FrI)
- Common Masses:* Holy Men and Women
- Common Masses:* Pastors
- Ritual Masses:* For the Admission to Candidacy for the Diaconate and for the Priesthood
- Various Needs:* For the Church - For Priests
- Various Needs:* For the Church - For Vocations to Holy Orders or Religious Life
- Jan 17\*:* Memorial of St. Anthony, abbot (mem0117)
- Feb 21\*:* Optional memorial of St. Peter Damian, bishop and doctor of the church (optmem0221)
- Apr 2\*:* Optional memorial of St. Francis of Paola, hermit (optmem0240)
- Jun 21\*:* Memorial of St. Aloysius Gonzaga, religious (mem0621)
- Aug 11\*:* Memorial of St. Clare, virgin (mem0811)
- Oct 4\*:* Memorial of St. Francis of Assisi, religious (mem1004)
- Oct 23\*:* Optional memorial of St. John of Capistrano, priest (optmem1023)

Baccalaureate/Graduations  
\*not on Sundays  
Use with Psalm Tone 8 in Dm

## Text version:

### You Are My Inheritance (Cherolyn Klosner Lane)

You are my inheritance, O Lord.

Psalm refrain Copyright © 1969, 1981, 1997, International Commission on English in the Liturgy, Inc. (ICEL). All rights reserved.  
Music Copyright © 2000 Light the Fire! Music (ASCAP). All rights reserved. Used with permission.

This psalm rendition is USCCB-approved and uses Verbatim Text on refrain and verses.

Report to CCLI and/or OneLicense.

CCLI Song #7148076

OneLicense Song ID: yami16