

You Are My Inheritance
Ps. 16

for Soloist/Small Group

Cherolyn Klosner Lane

Light the Fire! Music

www.LTFMusic.com

Thank you for choosing **Cher & Gene Klosner's psalm series!**

All of our psalms are written in comfortable "congregational keys" and presented in SATB(+), but have been written so that all music ministry groups can use them, from soloist to duo, to contemporary praise teams (SAT), to full choirs. For SATB/choir, look up our octavo versions.

The vocals in this Small Group version are presented in treble clef, but can be sung by TB an octave lower. Typically, the higher harmony notes can be either Soprano or Tenor, and the lower harmony notes can be Alto or Bass. These harmonies can sometimes cross each other in some of our psalm settings. For the lower harmony for this psalm, follow the smaller notes on the melody line.

This PDF contains the following versions:

- Refrain P/G/V (w/two harmonies) + Verse chords (for cantor, singers, guitar/piano accompanists)
- Verses P/G/V (for cantor, accompanist)
- Refrain Assembly (for director, worship aid makers)

Format:

- Solo cantor refrain melody
- Choir and congregation respond in **unison** (melody) refrain
- Solo cantor verse
- Choir and congregation refrain with harmonies
- [Continue thru multiple verses and harmonized refrains]
- End with repeat of harmonized refrain (optional)

Verses are by ONE **cantor**, chant-style (non-metered, free rhythm) using either of the two melodies, depending on their vocal range. Verses are not designed for multiple singers or harmonies.

For the **accompanist**, the rhythm resumes (a tempo) on the last word of each verse to bring choir and congregation in for the refrain, which then has **choir** harmonies from there on out.

We like to do a double refrain after the last verse to "close out" the song, so we use the turnaround accompaniment for repeating the refrain, then the Final ending at the very end.

Note to accompanist:

Follow the "turnaround" chords when repeating the refrain (refer to recording).

Use the "interlude into verses" when going into verses.

Psalm Tones:

Overall, we have 16 different melodies of psalm tones for the verses that get "mixed and matched" with all the hundreds of different psalm refrains throughout the 3-year cycle, one per psalm refrain. We normally give two options from which the cantor can choose, depending on the cantor's vocal range; for this psalm, we give one psalm tone choice, but a few lower notes if needed. Choose the smaller notes for the lower melody.

This way, a cantor doesn't have to learn hundreds of different verse melodies over the three-year cycle.

The particular psalm tone assigned to this refrain is Psalm Tone 8 in Dm, which starts up a fifth from the end of the refrain (Mi in solfege on the **major** scale, not the minor).

Please report usage of this music to CCLI and/or OneLicense.

Other tips for the vocalists on "You Are My Inheritance":

Solo Cantor: Use with Psalm Tone 8 (in Dm). The Lead Sheet and PGV refrains are presented in treble clef for simplicity.

All Singers: Be mindful to pronounce the short "i" in "inheritance" correctly: "in-hair-ih-tense," **not** "in-hair-uh-tense" **nor** "in-hair-ee-tense." (Also, make sure "-tense" doesn't come out as "-tinse," or "-tanse" or "-tunse.")

Guitarists: in the verses, you can choose to add the B bass to your Dm6 or not.

We strongly recommend listening to the recordings of this psalm.

Musically yours,

Cher & Gene

DIFFICULTY LEVEL		
(easy/medium/advanced)		
melody	harmony	accompaniment
e	e	e

You Are My Inheritance

Ps. 16

Cherolyn Klosner-Lane

♩ = 88
Haunting

Capo 5: Am Dm G⁶/₉ C⁶/₉ Fmaj⁷ B^bmaj⁷ Em⁷ Am⁷

Piano

Melody/Harmony 1

1 Am Dm G⁶/₉ C⁶/₉ Fmaj⁷ B^bmaj⁷ Em⁷ Am⁷ D G⁶/₉ C⁶/₉ Fmaj⁷ B^bmaj⁷ Em⁷ Am⁷

You are my in - her - i - tance

Harmony 2

are my in - her - i - tance, O

Pno.

Melody/Harmony 1

5 Am Dm G⁶/₉ C⁶/₉ Fmaj⁷ Em⁷ Asus⁴ Dsus⁴ A D A D

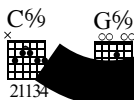
1. turnaround into repeated refrains and interlude into verses | 2. Final

You are my in - her - i - tance Lord.

Harmony 2

Lord, her - i - tance, O Lord.

Pno.



Verse chords (Psalm Tone 8), Piano/Guitar, no capo:

Dm | Am7 | Gm7 | A7 |
Bbmaj7 | Fadd9/A | Gm6/E | A7sus4 |

Verse chords (Psalm Tone 8), Guitar, capo 5:

Am | Em7 | Dm7 | E7 |
Fmaj7 | Cadd9/E | Dm6/B | E7sus4 |

You Are My Inheritance verses

Ps. 16: 5, 8, 9-10, 11 / Psalm Tone 8 in Dm

Easter Vigil (w/Reading II) / 33rd Sunday in Ordinary Time B / Graduals

Freely chanted, non-metered, solo cantor only

Cherubim Klosner-Laura Bene Klosner

Capo 5: Am Dm Em⁷ Dm⁷ /sus⁴ E⁷
Am⁷ Gm⁷ A⁷/sus⁴

PT 8
w/opt. lower melody

Piano

1. O LORD, my allotted portion and my cup, you it is who hold fast my
2. Therefore my heart is glad and my soul re - joi - ces, my body, too, a - bides in your confidence;
3. You will show me the path to life, fullness of joys in your pres - ence,

3 Fmaj⁷ Cadd⁹ Dm⁶/B Fadd⁹/A Dm⁶/E

8 B^bmaj⁷ Fadd⁹/A Dm⁶/E

Pno.

1. I set the LORD ever be - fore me, with him at my right hand I shall not be dis -
2. because you will not abandon my soul to the neth - er world, nee - ver will you suffer your faithful one to under - go cor -
3. the de - lights at your right hand at your right hand for -

5 E⁷/sus⁴ E A⁷/sus⁴ *rit. poco* E F#m⁷ E/G# Bm⁷ A/C#

8

Pno.

1. turbed.
2. rup - tion.
3. ev - er.

To m. 1 of refrain...

You Are My Inheritance verses
 Ps. 16: 1-2, 5, 7-8, 9-10, 11 / Psalm Tone 8 in Dm
 13th Sunday in Ordinary Time C

Freely chanted, non-metered, solo cantor only

Cherol Klosner-Lan Gene Klosner

Capo 5: Am Dm Em7 Am7 Dm7 Gm7 E7sus4 E7 A7sus4 A7

PT 8
 w/opt. lower melody

Piano

1. Keep me, O God, for in you I take ref-uge; I say to the LORD, "My De-liv-er-er are you.
 2. I bless the LORD who coun-sels me; even in the night my heart is comforted.
 3. Therefore my heart is glad and my soul re-joices, my body, too, abides in con-fidence
 4. You will show me the path to life, the paths of joys in your pres-ence,

3 Fmaj7 Bbmaj7 Cadd9 Fadd9/A Dm6/Bb

8

1. O LORD, my allot-ted por-tion and my cup, it is who hold fast my
 2. I set the LORD ever be-fore me, with him at my right hand I shall not be dis-
 3. because you will not abandon my soul to the neth-er-world, nor will you suffer your faith-ful one to under-go cor-
 4. the de-lights at your right hand at your right hand for-

Pno.

♩ = 88

5 E7sus4 A7sus4 *tempo* E F#m7 E/G# A Bm7 A/C#

8

1. lot."
 2. turbed.
 3. rup-tion.
 4. ex-

Pno.

To m. 1 of refrain...

You Are My Inheritance verses

Ps. 16: 1b-2a and 5, 7-8, 9-10 / Psalm Tone 8 in Dm
Saturday of the 12th Week in Ordinary Time (II)

Freely chanted, non-metered, solo cantor only

Cherol Klosner-Lan Gene Klosner

Capo 5: Am Dm Em⁷ Am⁷ Dm⁷ Gm⁷ E⁷ A⁷ sus⁴ sus⁴

PT 8
w/opt. lower melody

1. Keep me, O God, for in you I take ref - uge; I say to the LORD, "My LORD is you.
2. I bless the LORD who coun - sels me; even in the night my heart is comforted.
3. Therefore my heart is glad and my soul re - joi - ces, my body, too, abides in con - fidence;

Piano

3 8

Fmaj⁷ B^bmaj⁷ Cadd⁹ Fadd⁹/A Dm⁶/B^b Fadd⁹/A

1. O LORD, my allot - ted portion and my cup; you it is who hold fast my
2. I set the LORD ever be - fore me, with him at my right hand I shall not be dis -
3. because you will not abandon my soul to the neth - er world, nor will you suffer your faithful one to under - go cor -

Pno.

♩ = 88

5 8

E⁷/sus⁴ A⁷/sus⁴ *tempo* E A F[#]m⁷ Bm⁷ E/G[#] A/C[#]

1. lot."
2. turbed.
3. rup - tion.

Pno.

To m. 1 of refrain...

You Are My Inheritance verses

Ps. 16: 1b-2a and 5, 7-8, 9-10 / Psalm Tone 8 in Dm

Saturday of the 19th Week in Ordinary Time (I) / Friday of the 23rd Week in Ordinary Time (I) /

January 17 / February 21 / April 2 / June 21 / August 11 / October 4 / October 27

Common of Pastors / Common of Holy Men and Women / For Priests / For Vocations / For Candidacy / For Diaconate and Priesthood
(for more specific usage info, see Assembly page)

Freely chanted, non-metered, solo cantor only

Christylyn Klosner-Joseph/Gene Klosner

Capo 5: Am Dm Em7 Am7 Dm7 Gm7 E7sus4 A7sus4

PT 8
w/opt. lower melody

1. Keep me, O God, for in you I take ref - uge; I say to the LORD, "My LORD are
2. I bless the LORD who coun - sels me; even in the night my heart ex - horts me.
3. You will show me the path to life, in the land of joys in your pres - ence,

Piano

3 Fmaj7 Bbmaj7 Cadd9/E Cadd9/A Dm6/B Dm6/E

8

1. O LORD, my allot - ted portion and my cup, you it is who hold fast my
2. I set the LORD ever be - fore me; with him at my right hand I shall not be dis -
3. the LORD de - lights at your right hand, your right hand for

Pno.

♩ = 88

5 E7sus4 A7sus4 E F#m7 E/G# A Bm7 A/C#

1. lot.
2. turbed
3.

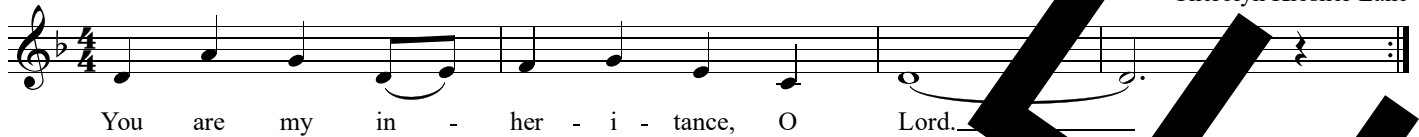
Pno.

To m. 1 of refrain...

You Are My Inheritance

Ps. 16

Cherolyn Klosner Lane



The English translation of Psalm Response from *Lectionary for Mass* © 1969, 1981, 1997, International Commission on English in the Liturgy, Inc. (ICEL). All rights reserved.
Music Copyright © 2000 Light the Fire! Music (ASCAP). All rights reserved. Used with permission. www.LighttheFire.com

Use for:

- Easter Vigil ABC (w/Reading II) (eastvigABC)
- 13th Sunday in Ordinary Time C (ord13C)
- 33rd Sunday in Ordinary Time B (ord33B)
- Saturday of the 10th Week in Ordinary Time (II) (ord10SaII)
- Saturday of the 19th Week in Ordinary Time (I) (ord19SaI)
- Friday of the 23rd Week in Ordinary Time (I) (ord23FrI)
- Common Masses:* Holy Men and Women
- Common Masses:* Pastors
- Ritual Masses:* For the Admission to Candidacy for the Diaconate and for the Priesthood
- Various Needs:* For the Church - For Priests
- Various Needs:* For the Church - For Vocations to Holy Orders or Religious Life
- Jan 17*:* Memorial of St. Anthony, abbot (mem0117)
- Feb 21*:* Optional memorial of St. Peter Damian, bishop and doctor of the church (optmem0221)
- Apr 2*:* Optional memorial of St. Francis of Paola, hermit (optmem0402)
- Jun 21*:* Memorial of St. Aloysius Gonzaga, religious (mem0621)
- Aug 11*:* Memorial of St. Clare, virgin (mem0811)
- Oct 4*:* Memorial of St. Francis of Assisi, religious (mem1004)
- Oct 23*:* Optional memorial of St. John of Capistrano, priest (optmem1023)

Baccalaureate/Graduations
*not on Sundays
Use with Psalm Tone 8 in Dm

Text version:

You Are My Inheritance (Cherolyn Klosner Lane)

You are my inheritance, O Lord.

Psalm refrain Copyright © 1969, 1981, 1997, International Commission on English in the Liturgy, Inc. (ICEL). All rights reserved.
Music Copyright © 2000 Light the Fire! Music (ASCAP). All rights reserved. Used with permission.

This psalm rendition is USCCB-approved and uses Verbatim Text on refrain and verses.

Report to CCLI and/or OneLicense.

CCLI Song #7148076

OneLicense Song ID: yami16