

May God Bless Us in His Mercy
Ps. 67

Cherolyn Klosner-Lane/Gene Klosner
Light the Fire! Music
www.LTFMusic.com

Thank you for choosing **Cher & Gene Klosner's psalm series!**

All of our psalms are written in comfortable "congregational keys," and presented in SATB(+), but have been written so that all music ministry groups can use them, from soloist to duo, to contemporary praise teams (SAT), to full choirs. Also available in Soloist/Small Group format.

This PDF contains the following versions:

- Refrain Full Score + Verse chords (for director; piano accompanist)
- Refrain P/G/V + Verse chords (for piano accompanist)
- Refrain Lead Sheet + Verse chords (for cantor, guitar accompanist, piano "chorders" - similar to fake books)
- Refrain SATB (for choir members)
- Verse P/G/V (for cantor, accompanist) - different sets of verses for different uses
- Refrain Assembly (for director, worship aid makers)

Format:

- Solo cantor refrain melody*
- Choir and congregation respond in **unison** (melody) refrain
- Solo cantor verse
- Choir and congregation refrain with harmonies
- [Continue thru multiple verses and harmonized refrains]
- End with repeat of harmonized refrain (optional)

*The melody line is the **soprano** part (male cantor sings an octave below), unless otherwise indicated.

Verses are by ONE **cantor**, chant-style (non-metered, free rhythm) using either of the two melodies, depending on their vocal range. Verses are not designed for multiple singers or harmonies.

For the **accompanist**, the rhythm resumes (a tempo) on the last word of each verse to bring choir and congregation in for the refrain, which then has **choir** harmonies from there on out.

We like to do a double refrain after the last verse to "close out" the song, so we use the turnaround accompaniment for repeating the refrain, then the Final ending at the very end.

Note to accompanist:

Follow the "turnaround" chords when repeating the refrain or going into verses (refer to recording).

Psalm Tones:

Overall, we have 16 different melodies of psalm tones for the verses that get "mixed and matched" with all the hundreds of different psalm refrains throughout the 3-year cycle, one per psalm refrain. We give two options from which the cantor can choose, depending on the cantor's vocal range. Choose the smaller notes for the lower melody.

This way, a cantor doesn't have to learn hundreds of different verse melodies over the three-year cycle.

The particular psalm tones being matched to this refrain are Psalm Tone 8 in Em, which starts up a fifth from the last note in the refrain (Mi in solfege on the **major** scale, not the minor), and Psalm Tone 9 in Em, which instead starts on the same note as at the end of the refrain (La in solfege on the **major** scale, not the minor).

Please report usage of this music to CCLI and/or OneLicense.

Other tips for the vocalists on "May God Bless Us in His Mercy":

Solo Cantor: Use with Psalm Tone 8 or 9 (in Em). The verses and Lead Sheet/PGV refrains are presented in treble clef for simplicity.

Altos: Yours is the only tricky harmony (earning the "m" in the difficulty chart below), in that you alternate between D-natural and D-sharp within the first three measures.

We strongly recommend listening to the recordings of this psalm.

Musically yours,

Cher & Gene

DIFFICULTY LEVEL		
(easy/medium/advanced)		
melody	harmony	accompaniment
e	m	e

May God Bless Us in His Mercy

Tenderly

Ps. 67

Cherolyn Klosner-Lane/
Gene Klosner

♩ = 78

Capo 2: Dm -2 Em A7/C# B7/D# Gm7 Am7 A7sus4 B7sus4 A7 B7

Piano

1 Dm Em A7 B7 Dm Em Dm7 Em7 Dm Em Dmsus4 Bmsus4 Gm7 Am7 Bm7

SA
May God bless us in his mercy, bless us in his mer - cy,

TB

Pno

4 D° Bm7/E Dm Em D° Bm7/E Dm Em

1. Turnaround into repeated refrains or into verses D.S. 2. Final

SA
bless us. bless us.

TB

Pno
1. Turnaround into repeated refrains or into verses D.S. 2. Final

Verse chords (Psalm Tone 8-9), Guitar, capo 2:

Dm | Am7 | Gm7 | A7 |
Bbmaj7 | Fadd9/A | Gm6/E | A7sus4 A7 |

Verse chords (Psalm Tone 8-9), Piano/Guitar, no capo:

Em | Bm7 | Am | B7 |
Cmaj7 | Gadd9/B | Am/F# | B7sus4 B7 |

May God Bless Us in His Mercy

Tenderly

Ps. 67

Cherolyn Klosner-Lane/
Gene Klosner

♩ = 78

Capo 2: Dm -2 Em A7/C# B7/D# Gm7 Am7 A7sus4 B7sus4 A7 B7

Piano

1 SA Dm Em A7 B7 Dm Em Dm7 Em7 Dm Em7 Gm7 Am7 A7sus4 B7sus4 A7 B7

May God bless us in his mer - cy, bless us in his mer - cy,

Pno

4 SA D9 Bm7/E Dm Em D9 Bm7/E Dm Em

1. Turnaround into refrains or into verses D.S. 2. Final

bless us. bless us.

Pno 1. Turnaround into refrains or into verses D.S. 2. Final

Verse chords (Psalm Tone 8-9), Guitar, capo 2:

D | Am7 | Gm7 | A7 |
Bmaj7 | Fadd9/A | Gm6/E | A7sus4 A7 |

Verse chords (Psalm Tone 8-9), Piano/Guitar, no capo:

Em | Bm7 | Am | B7 |
Cmaj7 | Gadd9/B | Am/F# | B7sus4 B7 |

May God Bless Us In His Mercy

Tenderly

Ps. 67

Cherolyn Klosner-Lane/
Gene Klosner

♩ = 78

Capo 2: *Dm* *A7/C#* *Gm7* *A7sus4* *A7*
-2 *Em* *B7/D#* *Am7* *B7sus4* *B7*

1 *Dm* *A7* *Dm* *Dm7* *Dm* *Dm* *Gm7*
Em *B7* *Em* *Em7* *Em* *Emsus* *m7*

SA May God bless us in his mer - cy, bless us in his mer - cy,

4 *D9* *Dm* *Dm*
Bm7/E *Em* *Bm7* *Em*

SA 1. Turnaround into repeated refrains or the verses. 2. Final

bless us. bless us.

Vers. chords (Psalm Tone 8-9), Guitar, capo 2:

Dm | *Am7* | *Gm7* | *A7* |
Cmaj7 | *Fadd9/A* | *Gm6/E* | *A7sus4* *A7* |

Vers. chords (Psalm Tone 8-9), Piano/Guitar, no capo:

Em | *Bm7* | *Am* | *B7* |
Cmaj7 | *Gadd9/B* | *Am/F#* | *B7sus4* *B7* |

May God Bless Us in His Mercy

Tenderly

Ps. 67

Cherolyn Klosner-Lane/
Gene Klosner

♩ = 78

NOTE: No harmonies/echoes until after 1st verse; follow Soprano line for melody. See format below.

-2

1

SA

May God bless in mer - cy,

TB

3

SA

bless us in his mer - us.

TB

Format:

- Solo cantor response
- Choir and congregation response (melody) refrain
- Solo cantor verse
- Choir and congregation refrain with harmonies
- [Continue thru multiple verses and harmonized refrains]
- End with repeat of harmonized refrain (optional)

The melody line is the soprano part (male cantor sings an octave below).

Alerts: note that there is a difference between D-natural and D-sharp in the first three measures.

May God Bless Us in His Mercy verses

Ps. 67: 2-3, 5, 6, 8 / Psalm Tone 8 & 9 in Em
Solemnity of Mary, the Holy Mother of God

Freely chanted, non-metered, solo cantor only

Cherub Klosner-Lafayette Klosner

Capo 2: Dm
PT 8/9*
*opt. lower melody

Em Am⁷ Gm⁷ A⁷sus⁴ A⁷
Bm⁷ Am⁷ B⁷sus⁴

1. May God have pity on us and bless us; may he let his face shine upon us.
2. May the nations be glad and exult because you rule the peoples in equity;
3. May the peoples praise you, O God; may all the peoples praise you!

Piano

3 8/9

Bbmaj⁷ Cmaj⁷ D⁹/A Bm⁶/E Am⁶/F#

1. So may your way be known upon earth; all nations, your sal-
2. the na - tions on earth may praise you.
3. May God bless and may all the ends of the earth

Pno.

♩ = 78

5 8/9

A⁷sus⁴ B⁷sus⁴ A B Bm⁷ A/C#
C#m⁷ B/D#

1. va - tion.
2. guide.
3. fear him!

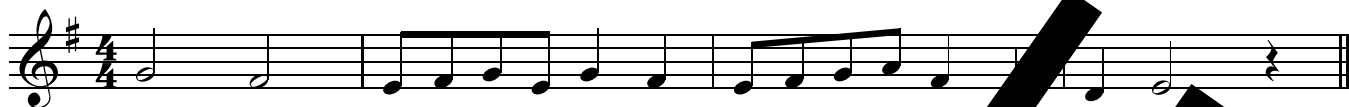
Pno.

To m. 1 of refrain...

May God Bless Us in His Mercy

Ps. 67

Cherolyn Klosner-Lane/Gene Klosner



May God bless us in his mer - cy, bless us in his mer - cy, bless us

Psalm refrain © 1968, 1981, 1997, International Committee on English in the Liturgy, Inc. (ICEL). All rights reserved. Used with permission.
Music Copyright © 2005 Light the Fire! Music (ASCAP). All rights reserved. www.LightTheFire.com

Use for:

Jan. 1: Solemnity of Mary, the Holy Mother of God [Blessed Virgin Mary, Mother of God] (sol10101ABC)

Use with Psalm Tone 8 or 9 in Em

Text version:

May God Bless Us in His Mercy (Ps. 67) (Cherolyn Klosner-Lane/Gene Klosner)

May God bless us in his mercy, bless us in his mercy, bless us

Refrain text Copyright © 1968, 1981, 1997, International Committee on English in the Liturgy, Inc. (ICEL). All rights reserved.
Music Copyright © 2005 Light the Fire! Music (ASCAP). All rights reserved. Used with permission.

This psalm rendition is USCCB-approved and uses Vatican II Latin Text for the refrain and verses.

Report usage to CCLI and/or OneLicense.

CCLI Song #7142849

OneLicense Song ID: mgbuihnt

SAMPLE