A scenic sunset over a lake, framed by the dark silhouettes of pine trees. The sky is a mix of orange, red, and blue, with the sun low on the horizon. The water reflects the colors of the sky. The trees are in the foreground, creating a natural frame for the scene.

Mass for the Journey

Luke D. Rosen

Revised Order of Mass 2010

Guitar / Vocal Edition

with Preface / Eucharistic Prayer II

For the community of
Corpus Christi University Parish
in Toledo, OH
in gratitude for 12 years of
support, care, challenge, and song.

February 10, 2012

Scored for:
Cantor/Presider
SATB Chorus
Flute
Clarinet in Bb
Alto Saxophone
Tenor Saxophone
Horn in F
Trumpet in Bb (I/II)
Trombone
Tuba
Piano
Guitar / Bass Guitar
Violin (I/II)
Viola
Violoncello

Mass for the Journey

Setting by Luke D. Rosen

Guitar / Vocal Edition
with Preface / Eucharistic Prayer II

Table of Contents

	Page
1. Penitential Act	2
2. Glory to God	4
3. Gospel Acclamation	11
4. Lenten Gospel Acclamation	14
5. General Intercessions	16
6. Preface II	18
7. Holy, Holy, Holy	20
8. Eucharistic Prayer II	22
9. We Proclaim Your Death (Memorial Acclamation A)	24
10. When We Eat This Bread (Memorial Acclamation B)	25
11. Save Us, Savior of the World (Memorial Acclamation C)	26
12. Eucharistic Prayer II continued	27
13. Amen	29
14. The Lord's Prayer	30
15. Lamb of God	32

Penitential Act

Luke D. Rosen

Andante ♩ = 80

Capo 2:

Cantor /
Presider

(A/C#//) (D//) (Gadd9//)
B/D#// (D//) Aadd9//

Cantor /
Presider

(A/C#//) (Dadd9//) (Gadd9//)
B/D#// Eadd9// Aadd9//

7

You were sent _____ to heal _____ on - trite _____ heart:

Cantor /
Presider

(Em) (D) (Bm) (G) (Bm) (D) (A/C#)
F#m C#m A C#m E B/D#

12

Ky - ri - e - le - i - son.

Choir

(Em) (D) (Bm) (G) (Bm) (D) (A/C#//)
F#m E C#m A C#m E D#//

16

Ky - ri - e - le - i - son.

Cantor /
Presider

(A/C#//) (Dadd9//) (Gadd9//)
B/D#// Eadd9// Aadd9//

20

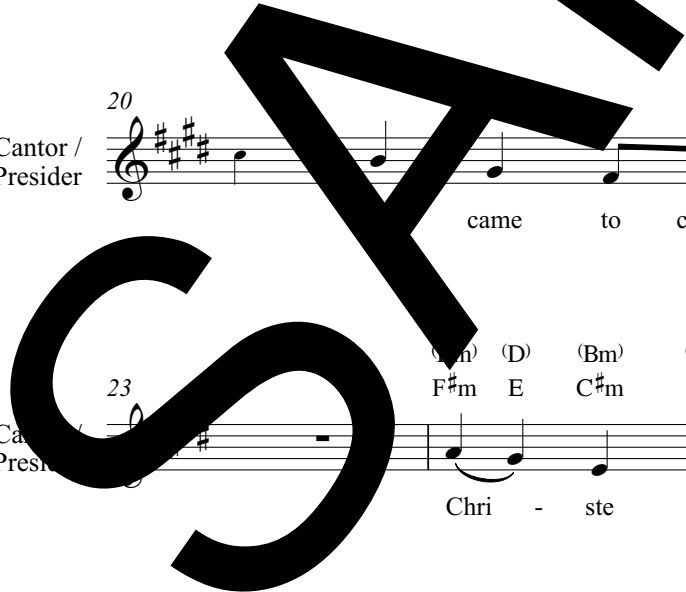
came to call sin - ners: _____

Cantor /
Presider

(Em) (D) (Bm) (G) (Bm) (D) (A/C#)
F#m E C#m A C#m E B/D#

23

Chri - ste e - le - i - son.



27 (Em) (D) (Bm) (G) (Bm) (D) (A/C#//)
 F#m E C#m A C#m E B/D#//

Choir
 Chri - ste e - le - i - son.

31 (A/C#//) (Dadd9//) (Gadd9//)
 Eadd9// Aadd9//

Cantor /
 President
 You are seat - ed at the right hand of Fa - ther to in - ter - cede for us:

36 (Em) (D) (Bm) (G) (Bm) (D) (A/C#)
 F#m C#m A C#m E B/D#

Cantor /
 President
 Ky - ri - e - le - i - son.

40 (Em) (Bm) (G) (Bm) (D) (A/C#//)
 F#m A C#m E B/D#//

Choir
 Ky - ri - e - le - i - son.

Glory to God

Luke D. Rosen

Allegro con brio ♩ = 65

Capo 2: (D) E (G/B) A/C# (B^b) C (Am⁷) Bm⁷ (Gm⁷) Am⁷ (Am⁷) Bm⁷

Keyboard *f*

Cantor Refrain

5 *mf* (D) E (G/B) A/C# (A/C#) B/D# (D) E (F#)

Choir / Con. *mf*

Glo - ry to God, glo - ry to God, glo - ry to

10 (G) A (A) B (G/A) A/B (A) B (D/F#) E/G# (G) (G/B) A/C# (Asus⁴) Bsus⁴ (A/G) B/A (A/C#) B/D# (D) E

Choir / Con.

God in the high - est, and on earth peace, on earth

16 (G) A (G/F#) A/G# (Em) F#m (D/F#) E/G# (Asus⁴) Bsus⁴ (G/A) A/B (Am⁷) Bm⁷ (Gm⁷) Am⁷ (Am⁷) Bm⁷

Choir / Con.

peace to peo - ple ge - ne - ral will.

Refrain

21 (D) E (G/B) A/C# (A/C#) B/D# (D) E (D/F#) E/G#

Choir *f*

Glo - ry to God, glo - ry to God, glo - ry to

Glo - ry to God, glo - ry to God, glo - ry to

(G) A (A) B (G/A) A/B (A) B (D/F#) E/G# (Asus⁴) Bsus⁴ (A/G) B/A (A/C#) B/D# (D) E

Choir

God in the high - est, and on earth peace, on earth

God in the high - est, and on earth peace, on earth

God in the high - est, and on earth peace, on earth

(G) (G/F#) (Em) (D/F#) (Asus4) (G/A) (Bb) (C) (D) (D//)
 A A/G# F#m E/G# Bsus4 A/B C D E E//
 32 peace to peo - ple of good will. go will. *mf* W

Choir
 earth - peace to peo - ple of good will, go will. *mf* W

peace to peo - ple of good will, good will.

Verse 1

(C) (Am7) (D) (C) (Am7) (D) (C) (Am7) (D)
 D Bm7 E D Bm7 E D Bm7 E

37 praise you, we bless you, we a - dore you, we

Choir /
 Con.

(D/F#) (D/G) (Asus4) (Asus4) (D) (Bm) (Gmaj7)
 E/G# E/A Bsus4 Bsus4/G# F#m E C#m Amaj7

40 glo - ri - fy you, give you thanks for your great

Choir /
 Con.

(A/C#) (D) (Gadd9) (Bb) (C)
 B/D# E Aadd9 C D

43 glo - ry to Lord God, heav - en - ly

Choir /
 Con.

(D) (Bb) (C) (Gm7/Bb) (Am7) (Gm7) (Am7)
 E C D Am7/C Bm7 Am7 Bm7

46 King, al - mighty Fa - ther.

Choir /
 Con.

Refrain

(D) (G/B) (A/C#) (D) (D/F#)
 E A/C# B/D# E E/G#

Glo - ry to God, glo - ry to God, glo - ry to

f Glo - ry to God, glo - ry to God

glo - ry to God, glo - ry to God, glo - ry to

55

(G) A in the (A) B high - (G/A) A/B est, (A) B (D/F#) E/G# and on earth (Asus4) Bsus4 peace, (A/G) on (A/C#) B/D# earth (D) E

Choir

God in the high - est, and on earth peace, on earth peace, on

God in the high - est, and on earth peace, on earth

61

(G) A peace (G/F#) A/G# to (Em) F#m peo - (D/F#) E/G# ple (Asus4) Bsus4 of (G/A) A/B god (Bb) D (C) D (D//) E E//

Choir

earth peace to peo - ple of god will, good will.

peace to peo - ple of god will, good will.

Verse 2

66

(Bb) C (Gm7) Am7 (D) E (C) Am (Am7) Bm7 (D) E (D/F#) E/G#

Choir

mf Lord Je - sus On - ly Be - got - ten Son,

(Em) C (D) E (Bm) C#m (G) A (A/C#) B/D# (D) E

Choir

Lamb of God, Son of the

SAMPLE

73

(Gadd⁹) Aadd⁹ (B^b) C (Am⁷) Bm⁷ (Gm⁷) Am⁷ (Am⁷) Bm⁷ have

Choir

Fa - ther, you take a - way the sins of the world

76

(D) (G) (C) (D) (B^b) (Am⁷) (Gm⁷)
E mer - cy on us, A D E C Bm⁷ Am⁷ re -

Choir

have mer - cy on us; you take a way the sins of the world,

80

(D) (G) (C) (D) (B^b) (Am⁷) (Gm⁷) (Am⁷)
E ceive our prayer, A D E C Bm⁷ Am⁷ Bm⁷

Choir

re - ceive our prayer; you are seated at the right hand of the

84

(D) (D/F#) (G/B) (Am⁷/C) (Am⁷) (Gm⁷) (Am⁷)
E E/G# A/C# Bm⁷ Am⁷ Bm⁷

Choir

Fa - ther, have mer - cy on us.

Refrain

(D) (G/B) (A/C#) (D) (D/F#)
E A/C# B/D# E E/G#
Glo - ry to God, glo - ry to God, glo - ry to God,

Choir

Glo - ry to God, glo - ry to God, glo - ry to God,



93

(G) A (A) (G/A) (A) (D/F#) (Asus⁴) (A/G) (A/C#) (D)
 B A/B B E/G# Bsus⁴ B/D# E

God in the high - est, and on earth peace, on earth

Choir

in the high - est, on earth peace, on

God in the high - est, and on earth peace, earth

99

(G) (G/F#) (Em) (D/F#) (Asus⁴) (G/A) (F#m) (C) (D) (D//)
 A A/G# F#m E/G# Bsus⁴ A/B D E E//

peace to peo - ple of good will, good will.

Choir

earth peace to peo - ple of good will, good will.

peace to peo - ple of good will, good will.

Verse 3

104

(D) (F#m) (F#m)
 E G#m G#m

mp For you a - lone are Ho - ly One, you a - lone are the Lord,

Choir

(D) (F#m) (Gm) (E^b) (Asus⁴)
 G#m Am F Bsus⁴ *cresc.*

a - lone are the Most High, Je - sus Christ,

Choir

112

(D/F#) E/G# (G) A (D/F#) E/G# (Bm/D) C#m/E (G/B) A/C#

Choir

ff with the

115

(A/C#) B/D# (D) E (G) A (D/F#) E/G# (G) A (D/F#) E/G# (Bm/D) C#m/E (G/B) A/C#

Choir

Spir - it, in the glo - ry of God the

119

(A/C#) B/D# (D) E (G) A (Bb) D (C) D (D) E

Choir

Fa - ther. A - men.

(Bb) C (Am7) Bm7 (Gm7) Am7 (Am7) Bm7 (Bb) C (C) D

A - men. A - men. A - men. A - men.

A - men. A - men. A - men. A - men.

A - men. A - men.

Final Refrain

129

(D) E (G/B) A/C# (A/C#) B/D# (D) E (D/F#) E/G#

Descant *f*

A - men. A - men. A - men. Glo - ry to

Glo - ry to God, glo - ry to God, - ry to

Choir *f*

men. Glo - ry to God, glo - ry to

Glo - ry to God, glo - ry to - ry to

134

(G) A (A) B (G/A) A/B (A) B (A/G#) (G) A (G/B) A/C# (Asus4) Bsus4 (G) B/A (A/C#) B/D# (D) E

Descant

God in the high - est, and on earth peace

God in the high and on earth peace, on earth

Choir

in the high - est, and on earth peace, on

God in the high - est, on earth peace, on earth

140

(G) A (G/A) A/G# (Em) (D/F#) E/G# (Asus4) Bsus4 (G/A) A/B (Bb) C (C) D (D) E (D//) E//

Descant

peo - ple of good will.

ce to peo - ple of good will.

Choir

peo - ple of good will, good will.

to peo - ple of good will, good will.



Gospel Acclamation

Luke D. Rosen

Maestoso ♩ = 55

Capo 2: (Em) (D) (Bm) (A) (Em) (D) (Asus⁴) (A)
 F#m E C#m B F#m E Bsus⁴ B

Keyboard *f*

Cantor Refrain
 5 *mf* (Em) (D) (Bm) (A) (Em) (D) (Asus⁴) (A)
 F#m E C#m B F#m E Bsus⁴ B

Cantor

Al - le - lu - ia, al - le - lu - ia, le - lu - ia!

9 (Em) (D) (Bm) (A) (Em) (D) (Asus⁴) (A)
 F#m E C#m B F#m E Bsus⁴ B

Cantor

Al - le - lu - ia, le - lu al - le - lu - ia!

Refrain
 13 *f* (Em) (Bm) (A) (Em) (D) (Asus⁴) (A)
 F#m C#m B F#m E Bsus⁴ B

Choir

Al - le - lu - ia, le - lu - ia, al - le - lu - ia!

(Em) (Bm) (A) (Em) (D) (Asus⁴) (A)
 F#m C#m B F#m E Bsus⁴ B

Choir

lu - ia, al - le - lu - ia, al - le - lu - ia!

Verse
 (D) (G/B) (A/C#)
 E A/C# B/D# E

Verse 1
 (Sundays of Ordinary Time)
mf One does not live on bread alone but on

(D) (G/B) (A/C#) (D)
 E A/C# B/D# E

Verse 2
 (Sundays of Ordinary Time)
mf Speak, O Lord, your servant is listening

(D) (G/B) (A/C#) E
 E A/C# B/D# E

Verse 3
 (Pentecost Sunday)
mf Come, Holy Spirit, the hearts of your faithful, and

(D/F#) (A) (G/A) (A) (Bm)
 E/G# B A/B B C#m

Verse 1
 (Sundays of Ordinary Time)
 e - very thing that is from the mouth of God.

(D/F#) (A) (G/A) (A) (Bm)
 E A B A/B B C#m

Verse 2
 (Sundays of Ordinary Time)
 you hear the words of everlasting life.

(D/F#) (G) (A) (G/A) (A) (Bm)
 E/G# A B A/B B C#m

Verse 3
 (Pentecost Sunday)
 kindle them the fire of your love.



Final Refrain

29 (Em/)
F#m// NC (Em) (D) sus4 (A)
F#m E Bsus4 B

Choir *f* Al - le - lu - ia, al - le - lu - ia, al - le - lu - ia!

33 (Em) (D) (Bm) (A) non rit. (Em) (D) (E)
F#m E C#m B E F#

Choir Al - le - lu - ia, al - le - lu - ia, al - le - lu - ia!

SAMPLE

Lenten Gospel Acclamation

Luke D. Rosen

Andante $\text{♩} = 43$

Capo 2: (Em) F#m (D) E (Bm) C#m (A) B (Em) F#m (D) E (Asus4) Bsus4 (A) B

Keyboard *f*

Cantor Refrain

5 (Em) F#m (D) E (Bm) C#m (A) B (Em) F#m (D) E (Asus4) Bsus4 (A) B

Cantor

Glo - ry to you, Word of Lord Je - sus Christ!

9 (Em) F#m (D) E (Bm) C#m (A) B (Em) F#m (D) E (Asus4) Bsus4 (A) B

Cantor

Glo - ry to you, Word of God, Je - sus Christ!

Refrain

13 (Em) F#m (D) E (Bm) C#m (A) B (Em) F#m (D) E (Asus4) Bsus4 (A) B

Choir *f*

Glo - ry to you, Word of God, Lord Je - sus Christ!

17 (Em) F#m (D) E (Bm) C#m (A) B (Em) F#m (D) E (Asus4) Bsus4 (A) B

Choir

Glo - ry to you, Word of God, Lord Je - sus Christ!

Verse

21 Verse 1 *mf* One does not live on bread alone but on

(D) E (G/B) A/C# (A/C#) B/D#

25 Verse 1 e - v'ry word that comes forth from the mouth of God.

(D/F#) E/G# (G) A (G/A) A/B (A) B (Bm) C#m

Final Refrain

29 Choir *f* Glo - ry to you, Word Lord Je - sus Christ!

(Em/) F#m// NC (Em) (D) (Asus4) (A) E Bsus4 B

Chorus *non rit.* Glo - ry to you, Word of God, Lord Je - sus Christ!

(F#m) (E) (Bm) (A) (Em) (D) (E) F#m E F#m

General Intercessions

Luke D. Rosen

Andante ♩ = 65

Capo 2: (Em) (D) (Bm) (G) (Bm) (D) (A/C#)
 F#m E C#m A C#m E B/D#

Cantor: *mf* (Em) (D) (G) (A)
 F#m E m A

Cantor: Lord, _____ prayer.

Assembly:

5 *f* (Em) (D) (Bm) (G) (A/C#)
 F#m E C#m A B/D#

Cantor: Lord, hear prayer.

Choir: *f* Lord, hear our prayer.

VAMP (prayer) as necessary

7 (D) (F#m) (D) (F#m) (Em) (D) (Bm) (G) (A/C#)
 E G#m G#m F#m E C#m A B/D#

Cantor: *mf* Lord, hear our prayer.

Final Refrain

Assembly:

11 *f* (Em) (D) (G) (A/C#)
 F#m E C#m A B/D#

Cantor: Lord, hear our prayer.

Choir: *f* Lord, hear our prayer.

VAMP (prayer)

(D) (F#m) (D) (F#m) (Bb//) (D//)
E G#m E G#m f C// E//

13

Cantor

Choir

A - - - men.

A - - - men.

SAMPLE

Preface II

Andante ♩ = 80

mf

Presider

Freely

Congregation/Choir:

Congregation/Choir:

Lord be with you. And with your spi-rit. Lift up your hearts and lift them up to the Lord.

Congregation/Choir:

Let us give thanks to the Lord our God. It is truly right and just. It is

truly right and just, truly our sal - vation, always and everywhere to give you thanks,

Lord, holy Fa - ther - mighty and e - ternal God, through Christ our Lord. For

out of com - passion at the waywardness that is ours, he humbled himself and was born of the Virgin; by the

SAMPLE

passion of the Cross he freed us from unending death, and by rising from the dead he gave us life eternal. And

so, with Angels and Arch-angels, with Thrones and Do-minions, and with all the hosts and Powers of heaven, we

Andante ♩ = 83

sing the hymn of your glory as without end we ac-

SAMPLE

Holy, Holy, Holy

Luke D. Rosen

Capo 2: (Em) (D) (Bm) (G) (Bm) (D) (A) (D/F#) (G) (D/F#) (Bm/D) (G/B) (D) (G)
f F#m E C#m A C#m E B E/G# A E/G# C#m/E A/C# D# E A

Choir

Presider (If Preface is sung):
 - claim:

f Ho - ly, Ho - ly Ho - ly Lord

Choir

(Bb) (Gm7) (C) (Am7) (D) (G/B) (A/C#) (D) (Em) (Bm) (G) (Bm) (D)
 C Am7 D Bm7 E A/C# B/D# F#m E A C#m E

God of hosts. He - ven and earth are full of your

Choir

(Asus4) (A) (D/F#) (G) (B) (Bm/D) (G/B) (A/C#) (D) (G) (G/A)
 Bsus4 E/G# A B C#m/E A/C# B/D# E A A/B

glo - ry. — Ho - - na in the high - est.

Choir

(Bb) (Gm7) (Am7) (Bb) (Gm7) (C) (Am7) (D) (G/B) (A/C#) (D/F#)
 Am7 Bm7 C Am7 D Bm7 E A/C# B/D# E/G#

- ed is he who comes in the name of the Lord. — Ho -

Freely

mf

Presider

You are indeed Holy, O Lord, the fount of all holiness. O God, most holy, therefore these gifts, we

pray, by sending down your Spirit upon them like the dewfall, so that

they may become for us the Body and Blood of our Lord Jesus Christ. At the

Freely

time he was betrayed and entered willingly into his Passion, he took

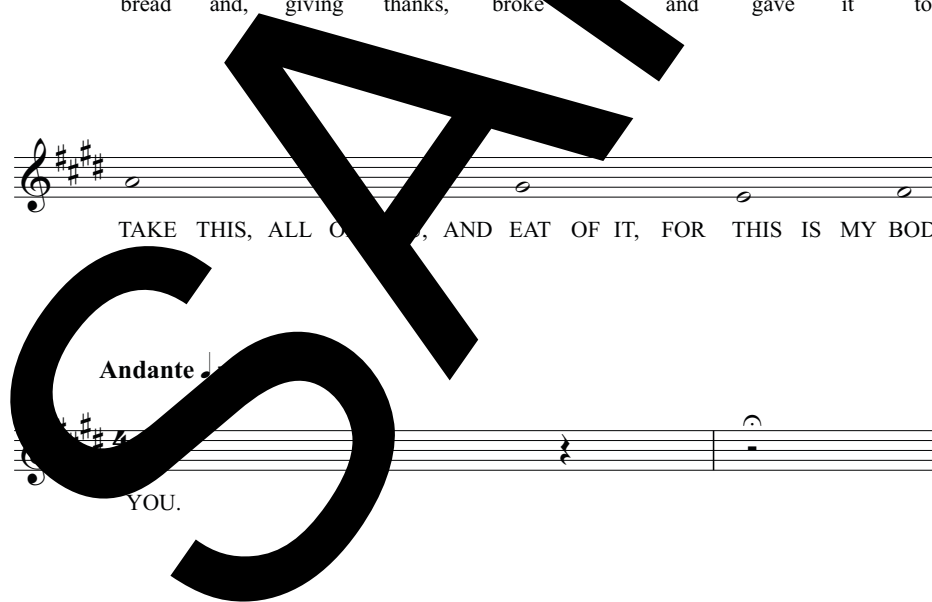
bread and, giving thanks, broke and gave it to his disciples, say - ing:

TAKE THIS, ALL OF IT, AND EAT OF IT, FOR THIS IS MY BODY WHICH WILL BE GIVEN UP FOR

Andante

YOU.

In a



Freely

similar way, when supper was ended, he took the chalice and, once more giving thanks, he gave it to his disciples, say-ing:

TAKE THIS, ALL OF YOU, AND DRINK FROM IT, FOR THIS IS THE CHALICE OF MY

BLOOD, THE BLOOD OF THE NEW AND ETERNAL COVENANT, WHICH WILL BE

POURED OUT FOR YOU AND FOR MANY FOR THE FOR-GIVENESS OF SINS. DO THIS IN MEMORY OF

Andante ♩ = 80

Maestoso ♩ = 83

ME. *f* The my - ste - ry of

SAMPLE

We Proclaim Your Death (Memorial Acclamation A)

Luke D. Rosen

Maestoso ♩ = 83

Capo 2: (Em) (D) (Bm) (G) (Bm) (D) (A) (D/F#) (F) (D) (F) (G)
f F#m E C#m A C#m E B E/G# f E E A

Choir

Presider (If Eucharistic Prayer is sung):
faith.

We claim y

Choir

5

(Bm) (D) (A/C#) (D/F#) (G) (Bm/D) (A/C#) (D)
C#m E B/D# E/G# A E/G# #m/E B/D# E

Death, O Lord, and pro - your Res - ur - rec -

Choir

8

(G) (G/F#) (Em) (G/B) (D/F#) (G) (D/F#) (Bm/D) (Bb) (D//)
A A/C# E/G# A E/G# C#m/E C E//

tion un - til you come a - gain.

rit.

SAMPLE

When We Eat This Bread (Memorial Acclamation B)

Luke D. Rosen

Maestoso ♩ = 83

Capo 2: (Em) F#m (D) E (Bm) C#m (G) A (Bm) C#m (D) E (A) B

Choir

f Presider (If Eucharistic Prayer is sung):
faith.

f When w

Choir

eat this Bread and drink this Cup, we pro - claim your

Choir

Death, O Lord, til y come a - gain.

rit.

SAMPLE

Save Us, Savior of the World (Memorial Acclamation C)

Luke D. Rosen

Maestoso ♩ = 83

Capo 2: (Em) (D) (Bm) (G) (Bm) (D) (A) (D/F#)
f F#m E C#m A C#m E B (G#)

Choir

Presider (If Eucharistic Prayer is sung):
 faith.

Choir

f (G) (D/F#) (Bm/D) (G/B) (A/C#) (D) (C) *mf* (Em) (D) (Bm) (G)
 A E/G# C#m/E A/C# B/D# E F# E C#m A

Save us, Sav - ior of world, for by your Cross and Res - ur -

Choir

rit. (Bm) (D) (A) (Em) (D) (D/F#) (G) (D/F#) (Bm/D) (Bb) (D//)
 C#m E B F#m A/C# E/G# A E/G# C#m/E C E//

rec - - tion you have set us free.



Eucharistic Prayer II (continued)

Luke D. Rosen

Freely

Presider *mf*

Therefore, as we celebrate the memorial of his Death and Resurrection, we offer you, Lord, the Bread of life and the Chalice of salvation, giving thanks that you have held us worthy to be in your presence and to minister to you. Humbly we pray that, par -

taking of the Body and Blood of Christ, we may be gathered into one by the Ho - ly Spirit. Re -

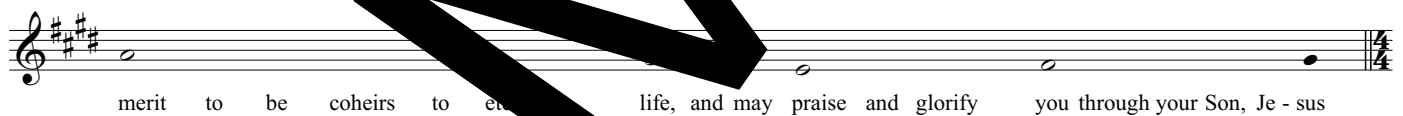
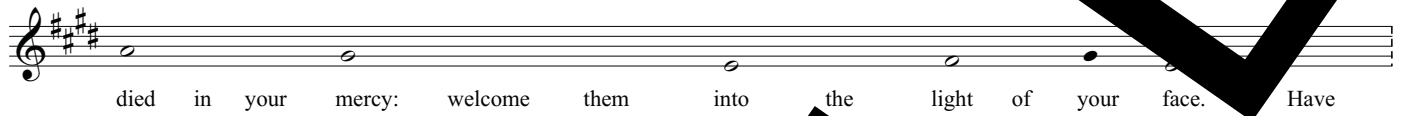
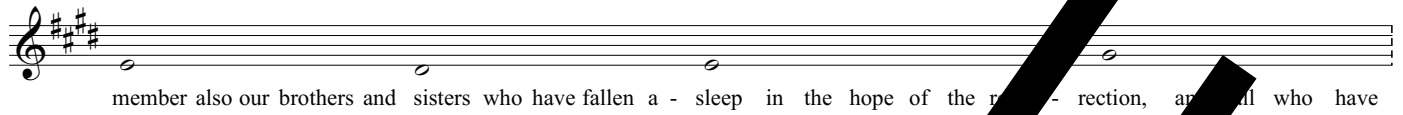
member, Lord, your Church, scattered throughout the world, and bring her to the fullness of charity, together with

(N.) our Pope and (N.) our Bishop and all the clergy. Re -

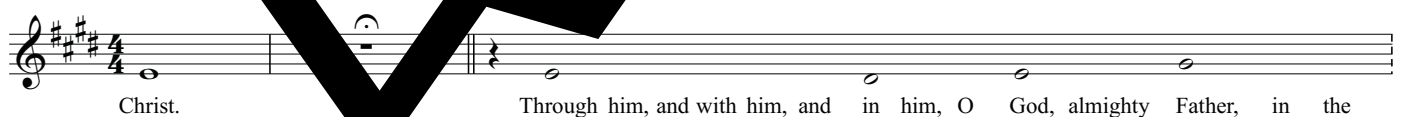
For the Dead:

member, Lord, (N.), whom you have called (today) from this world to your - self. Grant that

he/she who was united with your Son in a death like his, may also be one with him in his Re-sur-rection. Re -



Andante $\text{♩} = \text{♩}$ *Doxology:*



Maestoso $\text{♩} = 83$



Amen

Luke D. Rosen

Maestoso ♩ = 83

Capo 2: (Em) (D) (Bm) (G) (Bm) (D) (A) (D/F#)
f F#m E C#m A C#m E B E/G#

Choir

Presider (If Doxology is sung):
 e - - - ver.

Choir

f A - men, a - men, a - men,

(G) (D/F#) (Bm/D) (G/B) (A/C#) (D) (G) (D/F#)
 A E/G# C#m/E A/C# E A/G#

Choir

mf a - - - a - men.

rit.

(Em) (D) (G/B) (D/F#) (Bm/D) (Bb) (D//)
 F#m E A/C# E A E/G# C#m/E C E//

SAMPLE

The Lord's Prayer

Luke D. Rosen

Freely

mf

Presider

Musical staff for Presider, first line. Treble clef, key signature of three sharps (F#, C#, G#), 4/4 time signature. The staff contains a whole rest followed by a half note G4, a quarter note A4, and a quarter note B4. The lyrics "At the Savior's command and formed by" are written below the staff.

At the Savior's command and formed by

Presider

Musical staff for Presider, second line. Treble clef, key signature of three sharps (F#, C#, G#), 4/4 time signature. The staff contains a half note G4, a half note A4, a half note B4, a half note C5, a half note B4, a half note A4, and a half note G4. The lyrics "di - vine teach - ing, we dare to say:" are written below the staff.

di - vine teach - ing, we dare to say:

Choir

mf

Musical staff for Choir, first line. Treble clef, key signature of three sharps (F#, C#, G#), 4/4 time signature. The staff contains a series of chords: G4, A4, B4, C5, B4, A4, G4, F#4, E4, D4, C4, B3, A3, G3, F#3, E3, D3, C3, B2, A2, G2, F#2, E2, D2, C2, B1, A1, G1, F#1, E1, D1, C1, B0, A0, G0, F#0, E0, D0, C0, B-1, A-1, G-1, F#-1, E-1, D-1, C-1, B-2, A-2, G-2, F#-2, E-2, D-2, C-2, B-3, A-3, G-3, F#-3, E-3, D-3, C-3, B-4, A-4, G-4, F#-4, E-4, D-4, C-4, B-5, A-5, G-5, F#-5, E-5, D-5, C-5, B-6, A-6, G-6, F#-6, E-6, D-6, C-6, B-7, A-7, G-7, F#-7, E-7, D-7, C-7, B-8, A-8, G-8, F#-8, E-8, D-8, C-8, B-9, A-9, G-9, F#-9, E-9, D-9, C-9, B-10, A-10, G-10, F#-10, E-10, D-10, C-10, B-11, A-11, G-11, F#-11, E-11, D-11, C-11, B-12, A-12, G-12, F#-12, E-12, D-12, C-12, B-13, A-13, G-13, F#-13, E-13, D-13, C-13, B-14, A-14, G-14, F#-14, E-14, D-14, C-14, B-15, A-15, G-15, F#-15, E-15, D-15, C-15, B-16, A-16, G-16, F#-16, E-16, D-16, C-16, B-17, A-17, G-17, F#-17, E-17, D-17, C-17, B-18, A-18, G-18, F#-18, E-18, D-18, C-18, B-19, A-19, G-19, F#-19, E-19, D-19, C-19, B-20, A-20, G-20, F#-20, E-20, D-20, C-20, B-21, A-21, G-21, F#-21, E-21, D-21, C-21, B-22, A-22, G-22, F#-22, E-22, D-22, C-22, B-23, A-23, G-23, F#-23, E-23, D-23, C-23, B-24, A-24, G-24, F#-24, E-24, D-24, C-24, B-25, A-25, G-25, F#-25, E-25, D-25, C-25, B-26, A-26, G-26, F#-26, E-26, D-26, C-26, B-27, A-27, G-27, F#-27, E-27, D-27, C-27, B-28, A-28, G-28, F#-28, E-28, D-28, C-28, B-29, A-29, G-29, F#-29, E-29, D-29, C-29, B-30, A-30, G-30, F#-30, E-30, D-30, C-30, B-31, A-31, G-31, F#-31, E-31, D-31, C-31, B-32, A-32, G-32, F#-32, E-32, D-32, C-32, B-33, A-33, G-33, F#-33, E-33, D-33, C-33, B-34, A-34, G-34, F#-34, E-34, D-34, C-34, B-35, A-35, G-35, F#-35, E-35, D-35, C-35, B-36, A-36, G-36, F#-36, E-36, D-36, C-36, B-37, A-37, G-37, F#-37, E-37, D-37, C-37, B-38, A-38, G-38, F#-38, E-38, D-38, C-38, B-39, A-39, G-39, F#-39, E-39, D-39, C-39, B-40, A-40, G-40, F#-40, E-40, D-40, C-40, B-41, A-41, G-41, F#-41, E-41, D-41, C-41, B-42, A-42, G-42, F#-42, E-42, D-42, C-42, B-43, A-43, G-43, F#-43, E-43, D-43, C-43, B-44, A-44, G-44, F#-44, E-44, D-44, C-44, B-45, A-45, G-45, F#-45, E-45, D-45, C-45, B-46, A-46, G-46, F#-46, E-46, D-46, C-46, B-47, A-47, G-47, F#-47, E-47, D-47, C-47, B-48, A-48, G-48, F#-48, E-48, D-48, C-48, B-49, A-49, G-49, F#-49, E-49, D-49, C-49, B-50, A-50, G-50, F#-50, E-50, D-50, C-50, B-51, A-51, G-51, F#-51, E-51, D-51, C-51, B-52, A-52, G-52, F#-52, E-52, D-52, C-52, B-53, A-53, G-53, F#-53, E-53, D-53, C-53, B-54, A-54, G-54, F#-54, E-54, D-54, C-54, B-55, A-55, G-55, F#-55, E-55, D-55, C-55, B-56, A-56, G-56, F#-56, E-56, D-56, C-56, B-57, A-57, G-57, F#-57, E-57, D-57, C-57, B-58, A-58, G-58, F#-58, E-58, D-58, C-58, B-59, A-59, G-59, F#-59, E-59, D-59, C-59, B-60, A-60, G-60, F#-60, E-60, D-60, C-60, B-61, A-61, G-61, F#-61, E-61, D-61, C-61, B-62, A-62, G-62, F#-62, E-62, D-62, C-62, B-63, A-63, G-63, F#-63, E-63, D-63, C-63, B-64, A-64, G-64, F#-64, E-64, D-64, C-64, B-65, A-65, G-65, F#-65, E-65, D-65, C-65, B-66, A-66, G-66, F#-66, E-66, D-66, C-66, B-67, A-67, G-67, F#-67, E-67, D-67, C-67, B-68, A-68, G-68, F#-68, E-68, D-68, C-68, B-69, A-69, G-69, F#-69, E-69, D-69, C-69, B-70, A-70, G-70, F#-70, E-70, D-70, C-70, B-71, A-71, G-71, F#-71, E-71, D-71, C-71, B-72, A-72, G-72, F#-72, E-72, D-72, C-72, B-73, A-73, G-73, F#-73, E-73, D-73, C-73, B-74, A-74, G-74, F#-74, E-74, D-74, C-74, B-75, A-75, G-75, F#-75, E-75, D-75, C-75, B-76, A-76, G-76, F#-76, E-76, D-76, C-76, B-77, A-77, G-77, F#-77, E-77, D-77, C-77, B-78, A-78, G-78, F#-78, E-78, D-78, C-78, B-79, A-79, G-79, F#-79, E-79, D-79, C-79, B-80, A-80, G-80, F#-80, E-80, D-80, C-80, B-81, A-81, G-81, F#-81, E-81, D-81, C-81, B-82, A-82, G-82, F#-82, E-82, D-82, C-82, B-83, A-83, G-83, F#-83, E-83, D-83, C-83, B-84, A-84, G-84, F#-84, E-84, D-84, C-84, B-85, A-85, G-85, F#-85, E-85, D-85, C-85, B-86, A-86, G-86, F#-86, E-86, D-86, C-86, B-87, A-87, G-87, F#-87, E-87, D-87, C-87, B-88, A-88, G-88, F#-88, E-88, D-88, C-88, B-89, A-89, G-89, F#-89, E-89, D-89, C-89, B-90, A-90, G-90, F#-90, E-90, D-90, C-90, B-91, A-91, G-91, F#-91, E-91, D-91, C-91, B-92, A-92, G-92, F#-92, E-92, D-92, C-92, B-93, A-93, G-93, F#-93, E-93, D-93, C-93, B-94, A-94, G-94, F#-94, E-94, D-94, C-94, B-95, A-95, G-95, F#-95, E-95, D-95, C-95, B-96, A-96, G-96, F#-96, E-96, D-96, C-96, B-97, A-97, G-97, F#-97, E-97, D-97, C-97, B-98, A-98, G-98, F#-98, E-98, D-98, C-98, B-99, A-99, G-99, F#-99, E-99, D-99, C-99, B-100, A-100, G-100, F#-100, E-100, D-100, C-100, B-101, A-101, G-101, F#-101, E-101, D-101, C-101, B-102, A-102, G-102, F#-102, E-102, D-102, C-102, B-103, A-103, G-103, F#-103, E-103, D-103, C-103, B-104, A-104, G-104, F#-104, E-104, D-104, C-104, B-105, A-105, G-105, F#-105, E-105, D-105, C-105, B-106, A-106, G-106, F#-106, E-106, D-106, C-106, B-107, A-107, G-107, F#-107, E-107, D-107, C-107, B-108, A-108, G-108, F#-108, E-108, D-108, C-108, B-109, A-109, G-109, F#-109, E-109, D-109, C-109, B-110, A-110, G-110, F#-110, E-110, D-110, C-110, B-111, A-111, G-111, F#-111, E-111, D-111, C-111, B-112, A-112, G-112, F#-112, E-112, D-112, C-112, B-113, A-113, G-113, F#-113, E-113, D-113, C-113, B-114, A-114, G-114, F#-114, E-114, D-114, C-114, B-115, A-115, G-115, F#-115, E-115, D-115, C-115, B-116, A-116, G-116, F#-116, E-116, D-116, C-116, B-117, A-117, G-117, F#-117, E-117, D-117, C-117, B-118, A-118, G-118, F#-118, E-118, D-118, C-118, B-119, A-119, G-119, F#-119, E-119, D-119, C-119, B-120, A-120, G-120, F#-120, E-120, D-120, C-120, B-121, A-121, G-121, F#-121, E-121, D-121, C-121, B-122, A-122, G-122, F#-122, E-122, D-122, C-122, B-123, A-123, G-123, F#-123, E-123, D-123, C-123, B-124, A-124, G-124, F#-124, E-124, D-124, C-124, B-125, A-125, G-125, F#-125, E-125, D-125, C-125, B-126, A-126, G-126, F#-126, E-126, D-126, C-126, B-127, A-127, G-127, F#-127, E-127, D-127, C-127, B-128, A-128, G-128, F#-128, E-128, D-128, C-128, B-129, A-129, G-129, F#-129, E-129, D-129, C-129, B-130, A-130, G-130, F#-130, E-130, D-130, C-130, B-131, A-131, G-131, F#-131, E-131, D-131, C-131, B-132, A-132, G-132, F#-132, E-132, D-132, C-132, B-133, A-133, G-133, F#-133, E-133, D-133, C-133, B-134, A-134, G-134, F#-134, E-134, D-134, C-134, B-135, A-135, G-135, F#-135, E-135, D-135, C-135, B-136, A-136, G-136, F#-136, E-136, D-136, C-136, B-137, A-137, G-137, F#-137, E-137, D-137, C-137, B-138, A-138, G-138, F#-138, E-138, D-138, C-138, B-139, A-139, G-139, F#-139, E-139, D-139, C-139, B-140, A-140, G-140, F#-140, E-140, D-140, C-140, B-141, A-141, G-141, F#-141, E-141, D-141, C-141, B-142, A-142, G-142, F#-142, E-142, D-142, C-142, B-143, A-143, G-143, F#-143, E-143, D-143, C-143, B-144, A-144, G-144, F#-144, E-144, D-144, C-144, B-145, A-145, G-145, F#-145, E-145, D-145, C-145, B-146, A-146, G-146, F#-146, E-146, D-146, C-146, B-147, A-147, G-147, F#-147, E-147, D-147, C-147, B-148, A-148, G-148, F#-148, E-148, D-148, C-148, B-149, A-149, G-149, F#-149, E-149, D-149, C-149, B-150, A-150, G-150, F#-150, E-150, D-150, C-150, B-151, A-151, G-151, F#-151, E-151, D-151, C-151, B-152, A-152, G-152, F#-152, E-152, D-152, C-152, B-153, A-153, G-153, F#-153, E-153, D-153, C-153, B-154, A-154, G-154, F#-154, E-154, D-154, C-154, B-155, A-155, G-155, F#-155, E-155, D-155, C-155, B-156, A-156, G-156, F#-156, E-156, D-156, C-156, B-157, A-157, G-157, F#-157, E-157, D-157, C-157, B-158, A-158, G-158, F#-158, E-158, D-158, C-158, B-159, A-159, G-159, F#-159, E-159, D-159, C-159, B-160, A-160, G-160, F#-160, E-160, D-160, C-160, B-161, A-161, G-161, F#-161, E-161, D-161, C-161, B-162, A-162, G-162, F#-162, E-162, D-162, C-162, B-163, A-163, G-163, F#-163, E-163, D-163, C-163, B-164, A-164, G-164, F#-164, E-164, D-164, C-164, B-165, A-165, G-165, F#-165, E-165, D-165, C-165, B-166, A-166, G-166, F#-166, E-166, D-166, C-166, B-167, A-167, G-167, F#-167, E-167, D-167, C-167, B-168, A-168, G-168, F#-168, E-168, D-168, C-168, B-169, A-169, G-169, F#-169, E-169, D-169, C-169, B-170, A-170, G-170, F#-170, E-170, D-170, C-170, B-171, A-171, G-171, F#-171, E-171, D-171, C-171, B-172, A-172, G-172, F#-172, E-172, D-172, C-172, B-173, A-173, G-173, F#-173, E-173, D-173, C-173, B-174, A-174, G-174, F#-174, E-174, D-174, C-174, B-175, A-175, G-175, F#-175, E-175, D-175, C-175, B-176, A-176, G-176, F#-176, E-176, D-176, C-176, B-177, A-177, G-177, F#-177, E-177, D-177, C-177, B-178, A-178, G-178, F#-178, E-178, D-178, C-178, B-179, A-179, G-179, F#-179, E-179, D-179, C-179, B-180, A-180, G-180, F#-180, E-180, D-180, C-180, B-181, A-181, G-181, F#-181, E-181, D-181, C-181, B-182, A-182, G-182, F#-182, E-182, D-182, C-182, B-183, A-183, G-183, F#-183, E-183, D-183, C-183, B-184, A-184, G-184, F#-184, E-184, D-184, C-184, B-185, A-185, G-185, F#-185, E-185, D-185, C-185, B-186, A-186, G-186, F#-186, E-186, D-186, C-186, B-187, A-187, G-187, F#-187, E-187, D-187, C-187, B-188, A-188, G-188, F#-188, E-188, D-188, C-188, B-189, A-189, G-189, F#-189, E-189, D-189, C-189, B-190, A-190, G-190, F#-190, E-190, D-190, C-190, B-191, A-191, G-191, F#-191, E-191, D-191, C-191, B-192, A-192, G-192, F#-192, E-192, D-192, C-192, B-193, A-193, G-193, F#-193, E-193, D-193, C-193, B-194, A-194, G-194, F#-194, E-194, D-194, C-194, B-195, A-195, G-195, F#-195, E-195, D-195, C-195, B-196, A-196, G-196, F#-196, E-196, D-196, C-196, B-197, A-197, G-197, F#-197, E-197, D-197, C-197, B-198, A-198, G-198, F#-198, E-198, D-198, C-198, B-199, A-199, G-199, F#-199, E-199, D-199, C-199, B-200, A-200, G-200, F#-200, E-200, D-200, C-200, B-201, A-201, G-201, F#-201, E-201, D-201, C-201, B-202, A-202, G-202, F#-202, E-202, D-202, C-202, B-203, A-203, G-203, F#-203, E-203, D-203, C-203, B-204, A-204, G-204, F#-204, E-204, D-204, C-204, B-205, A-205, G-205, F#-205, E-205, D-205, C-205, B-206, A-206, G-206, F#-206, E-206, D-206, C-206, B-207, A-207, G-207, F#-207, E-207, D-207, C-207, B-208, A-208, G-208, F#-208, E-208, D-208, C-208, B-209, A-209, G-209, F#-209, E-209, D-209, C-209, B-210, A-210, G-210, F#-210, E-210, D-210, C-210, B-211, A-211, G-211, F#-211, E-211, D-211, C-211, B-212, A-212, G-212, F#-212, E-212, D-212, C-212, B-213, A-213, G-213, F#-213, E-213, D-213, C-213, B-214, A-214, G-214, F#-214, E-214, D-214, C-214, B-215, A-215, G-215, F#-215, E-215, D-215, C-215, B-216, A-216, G-216, F#-216, E-216, D-216, C-216, B-217, A-217, G-217, F#-217, E-217, D-217, C-217, B-218, A-218, G-218, F#-218, E-218, D-218, C-218, B-219, A-219, G-219, F#-219, E-219, D-219, C-219, B-220, A-220, G-220, F#-220, E-220, D-220, C-220, B-221, A-221, G-221, F#-221, E-221, D-221, C-221, B-222, A-222, G-222, F#-222, E-222, D-222, C-222, B-223, A-223, G-223, F#-223, E-223, D-223, C-223, B-224, A-224, G-224, F#-224, E-224, D-224, C-224, B-225, A-225, G-225, F#-225, E-225, D-225, C-225, B-226, A-226, G-226, F#-226, E-226, D-226, C-226, B-227, A-227, G-227, F#-227, E-227, D-227, C-227, B-228, A-228, G-228, F#-228, E-228, D-228, C-228, B-229, A-229, G-229, F#-229, E-229, D-229, C-229, B-230, A-230, G-230, F#-230, E-230, D-230, C-230, B-231, A-231, G-231, F#-231, E-231, D-231, C-231, B-232, A-232, G-232, F#-232, E-232, D-232, C-232, B-233, A-233, G-233, F#-233, E-233, D-233, C-233, B-234, A-234, G-234, F#-234, E-234, D-234, C-234, B-235, A-235, G-235, F#-235, E-235, D-235, C-235, B-236, A-236, G-236, F#-236, E-236, D-236, C-236, B-237, A-237, G-237, F#-237, E-237, D-237, C-237, B-238, A-238, G-238, F#-238, E-238, D-238, C-238, B-239, A-239, G-239, F#-239, E-239, D-239, C-239, B-240, A-240, G-240, F#-240, E-240, D-240, C-240, B-241, A-241, G-241, F#-241, E-241, D-241, C-241, B-242, A-242, G-242, F#-242, E-242, D-242, C-242, B-243, A-243, G-243, F#-243, E-243, D-243, C-243, B-244, A-244, G-244, F#-244, E-244, D-244, C-244, B-245, A-245, G-245, F#-245, E-245, D-245, C-245, B-246, A-246, G-246, F#-246, E-246, D-246, C-246, B-247, A-247, G-247, F#-247, E-247, D-247, C-247, B-248, A-248, G-248, F#-248, E-248, D-248, C-248, B-249, A-249, G-249, F#-249, E-249, D-249, C-249, B-250, A-250, G-250, F#-250, E-250, D-250, C-250, B-251, A-251, G-251, F#-251, E-251, D-251, C-251, B-252, A-252, G-252, F#-252, E-252, D-252, C-252, B-253, A-253, G-253, F#-253, E-253, D-253, C-253, B-254, A-254, G-254, F#-254, E-254, D-254, C-254, B-255, A-255, G-255, F#-255, E-255, D-255, C-255, B-256, A-256, G-256, F#-256, E-256, D-256, C-256, B-257, A-257, G-257, F#-257, E-257, D-257, C-257, B-258, A-258, G-258, F#-258, E-258, D-258, C-258, B-259, A-259, G-259, F#-259, E-259, D-259, C-259, B-260, A-260, G-260, F#-260, E-260, D-260, C-260, B-261, A-261, G-261, F#-261, E-261, D-261, C-261, B-262, A-262, G-262, F#-262, E-262, D-262, C-262, B-263, A-263, G-263, F#-263, E-263, D-263, C-263, B-264, A-264, G-264, F#-264, E-264, D-264, C-264, B-265, A-265, G-265, F#-265, E-265, D-265, C-265, B-266, A-266, G-266, F#-266, E-266, D-266, C-266, B-267, A-267, G-267, F#-267, E-267, D-267, C-267, B-268, A-268, G-268, F#-268, E-268, D-268, C-268, B-269, A-269, G-269, F#-269, E-269, D-269, C-269, B-270, A-270, G-270, F#-270, E-270, D-270, C-270, B-271, A-271, G-271, F#-271, E-271, D-271, C-271, B-272, A-272, G-272, F#-272, E-272, D-272, C-272, B-273, A-273, G-273, F#-273, E-273, D-273, C-273, B-274, A-274, G-274, F#-274, E-274, D-274, C-274, B-275, A-275, G-275, F#-275, E-275, D-275, C-275, B-276, A-276, G-276, F#-276, E-276, D-276, C-276, B-277, A-277, G-277, F#-277, E-277, D-277, C-277, B-278, A-278, G-278, F#-278, E-278, D-278, C-278, B-279, A-279, G-279, F#-279, E-279, D-279, C-279, B-280, A-280, G-280, F#-280, E-280, D-280, C-280, B-281, A-281, G-281, F#-281, E-281, D-281, C-281, B-282, A-282, G-282, F#-282, E-282, D-282, C-282, B-283, A-283, G-283, F#-283, E-283, D-283, C-283, B-284, A-284, G-284, F#-284, E-284, D-284, C-284, B-285, A-285, G

Choir

tres - pass - es, as we for - give those who tres - pass a - gainst us,

Choir

and lead us not in - to temp - ta - tion but de - liver us from e - vil.

Presider

De - liv - er us, O Lord, from every - thing, Graciously

Presider

grant peace to our days, that, by the help of your mercy,

Presider

pray for us from sin and save from all dis - tress,

Presider

as we await the bless - ed hope and the coming of our Sa - vior, Je - sus Christ.

Choir

For the king - dom, the power and the glo - ry are yours now and for e - ver.

Lamb of God

Luke D. Rosen

Andante ♩ = 83

Capo 2: (B^b) C (C) D (D) E (D/F[#]) E/G[#] (G) (D/F[#]) E/G[#] (Bm/D) C^{#m} (G/B) A/C[#]

Keyboard *mf*

(A/C[#]) B/D[#] (F^{#m}7) G^{#m}7 (G) A (A) B *mf* (B^b) C (C) D (D/F[#]) E/G[#]

Choir Lamb of God, you

(G) A (D/F[#]) E/G[#] (Bm/D) C^{#m}/E (G/B) A/C[#] (A/C[#]) B/D[#] (F^{#m}7) G^{#m}7 (G) A (G/F[#]) A/G[#] (E^m) F^{#m} (D/F[#]) E/G[#] (G/A) A/B (D/F[#]) E/G[#]

Choir take a - way the of the world have mer - cy on

(G) A (D/F[#]) E/G[#] (Bm/D) C^{#m} (A/C[#]) B/D[#] (F^{#m}7) G^{#m}7 (G) A (A) B

Choir us.

(B^b) C (D) E (D/F[#]) E/G[#] (G) A (D/F[#]) E/G[#] (Bm/D) C^{#m}/E (G/B) A/C[#]

Choir Lamb of God, you take a - way the

SAMPLE

18 (A/C#) (F#m7) (G) (G/A) (Bb) (C) (D) (F#)
 B/D# G#m7 A A/B C D E F#/G#

Choir
 sins of the world, grant us peace,

22 (Gm7) (Am7) (G) rit. (D//) (F#)
 Am7 Bm7 A E//

Choir
 grant us peace.

SAMPLE

